

ACCESSO PEDONALE E CARRAIO DA VIA P. CANAL

ACCESSO CIMITERO EBRAICO

NUOVI CANCELLI DI ACCESSO

P
P
P
P
P
P
P
P
P
PH
PH

ALTA 200 POSTI 280 mq

ALTA 200 POSTI 280 mq

ALTA 200 POSTI 280 mq

ALTA 200 POSTI 280 mq

ALTA 200 POSTI 280 mq

ALTA 200 POSTI 280 mq

ALTA 200 POSTI 280 mq

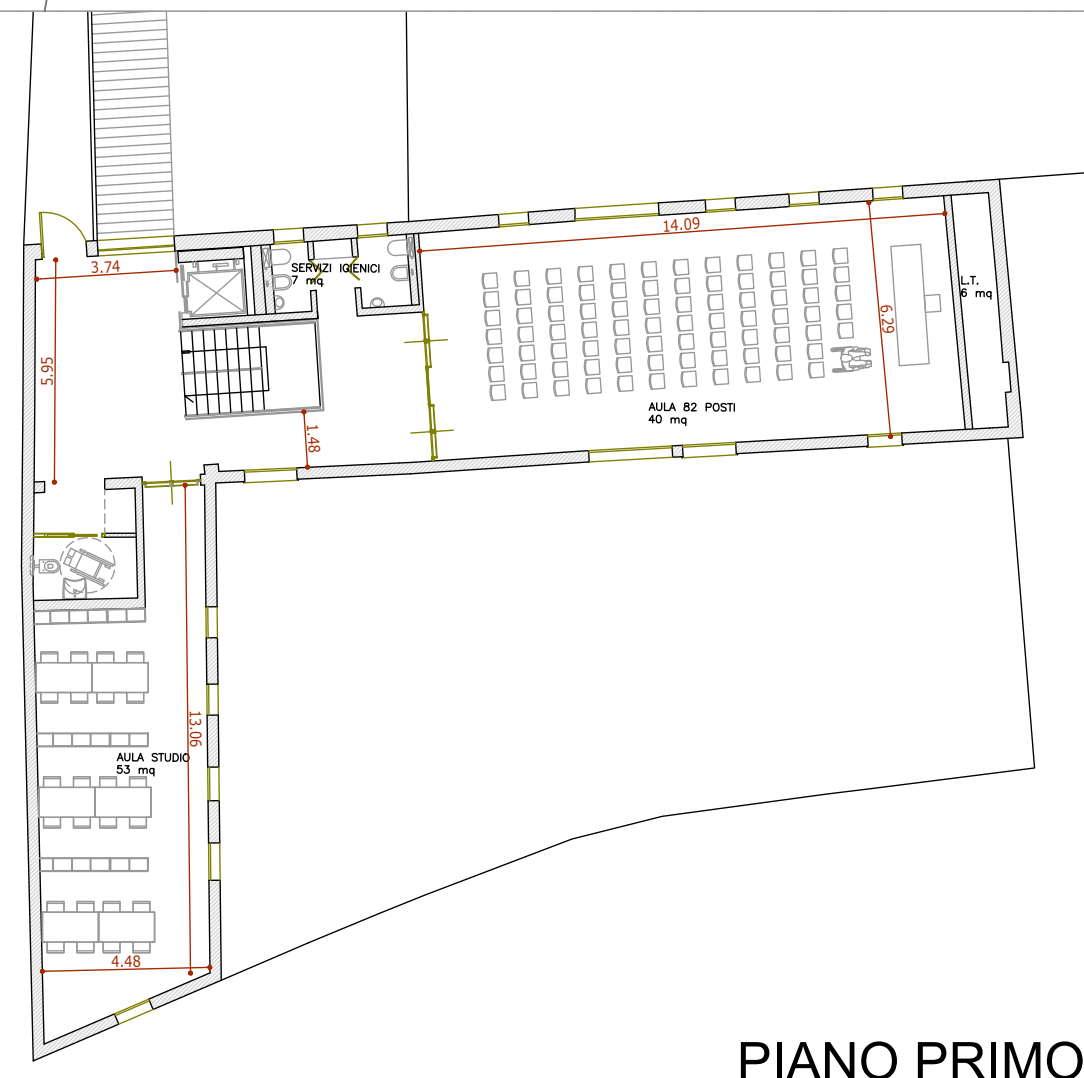
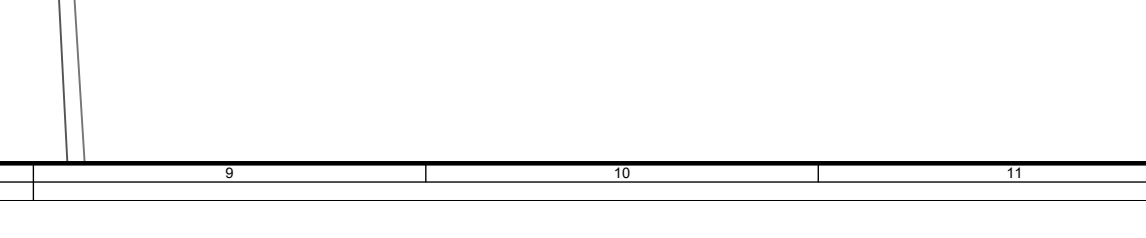
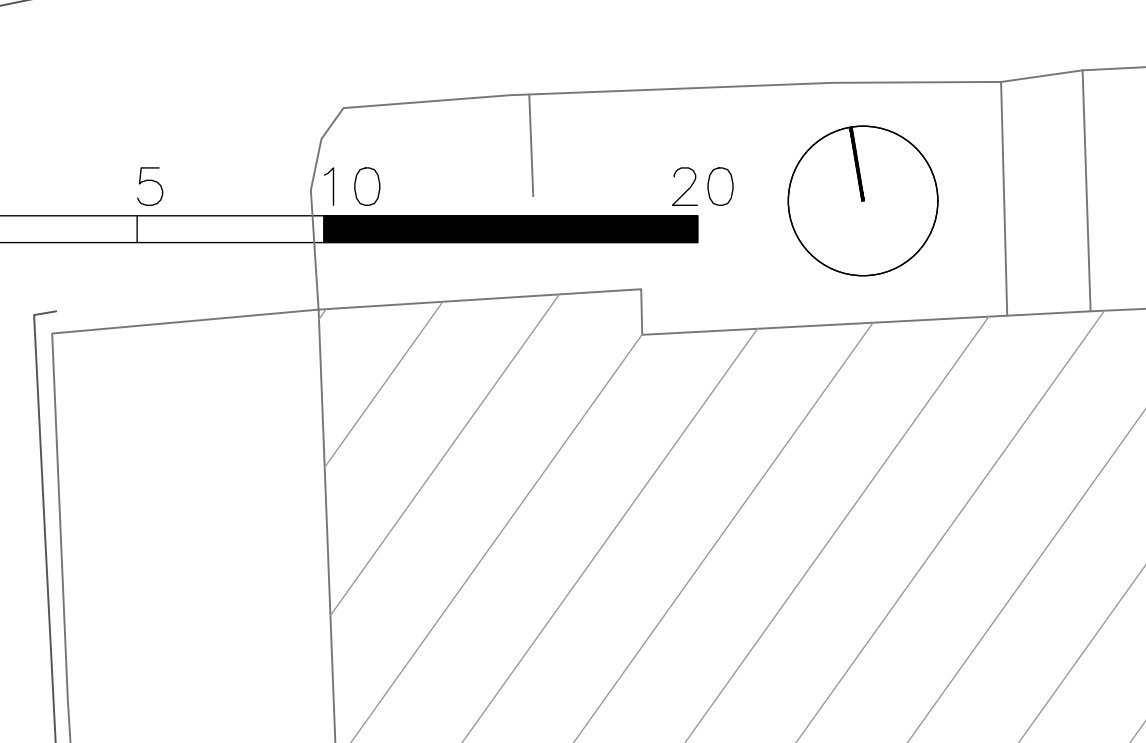
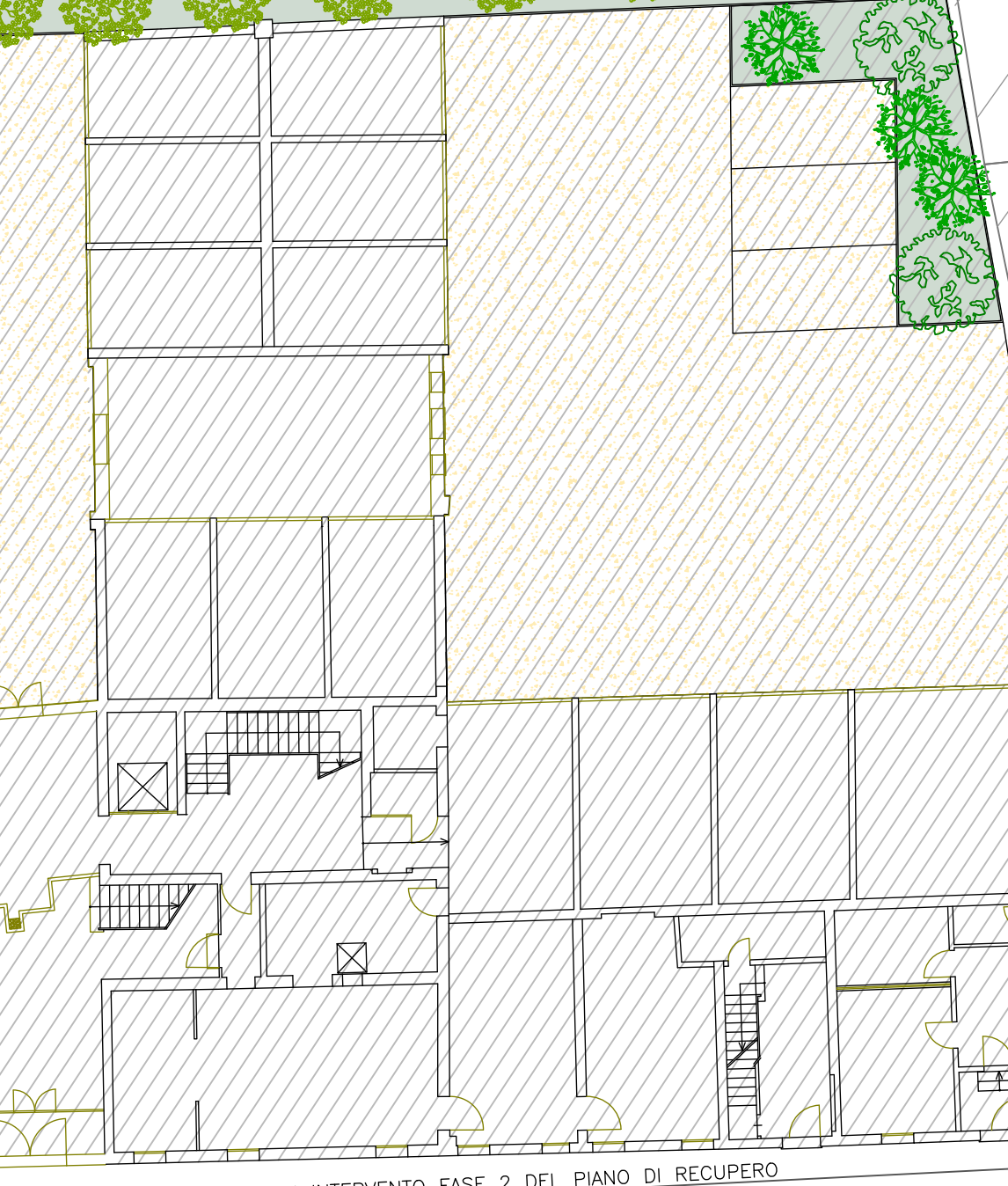
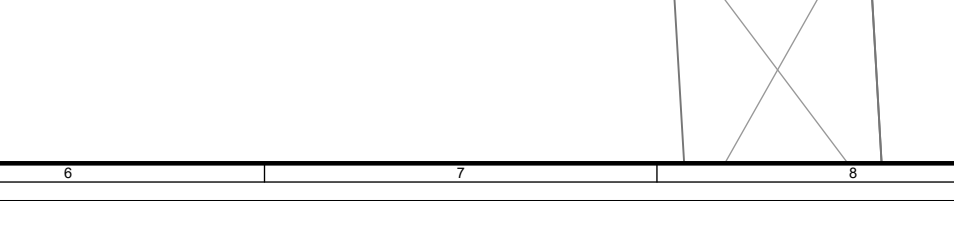
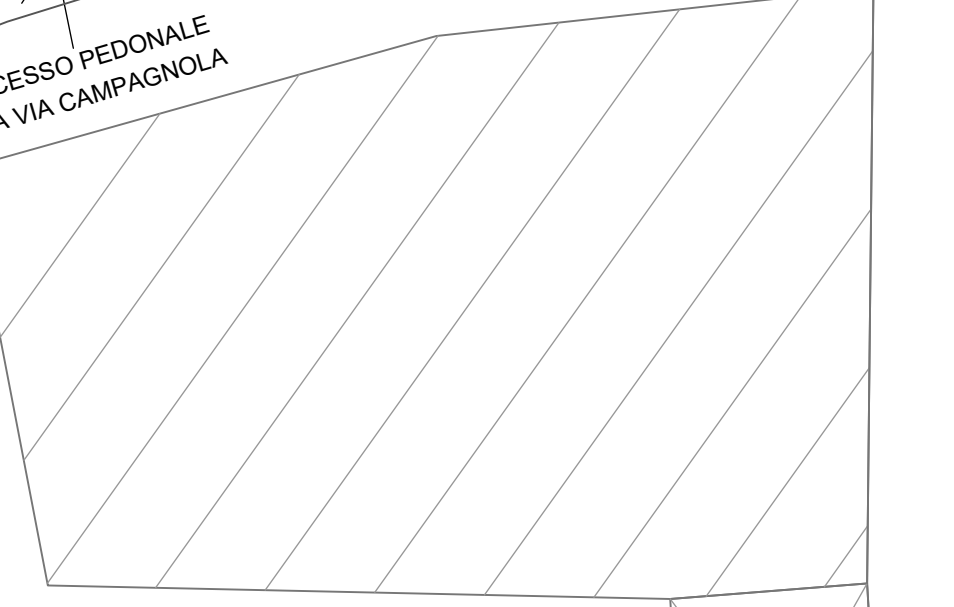
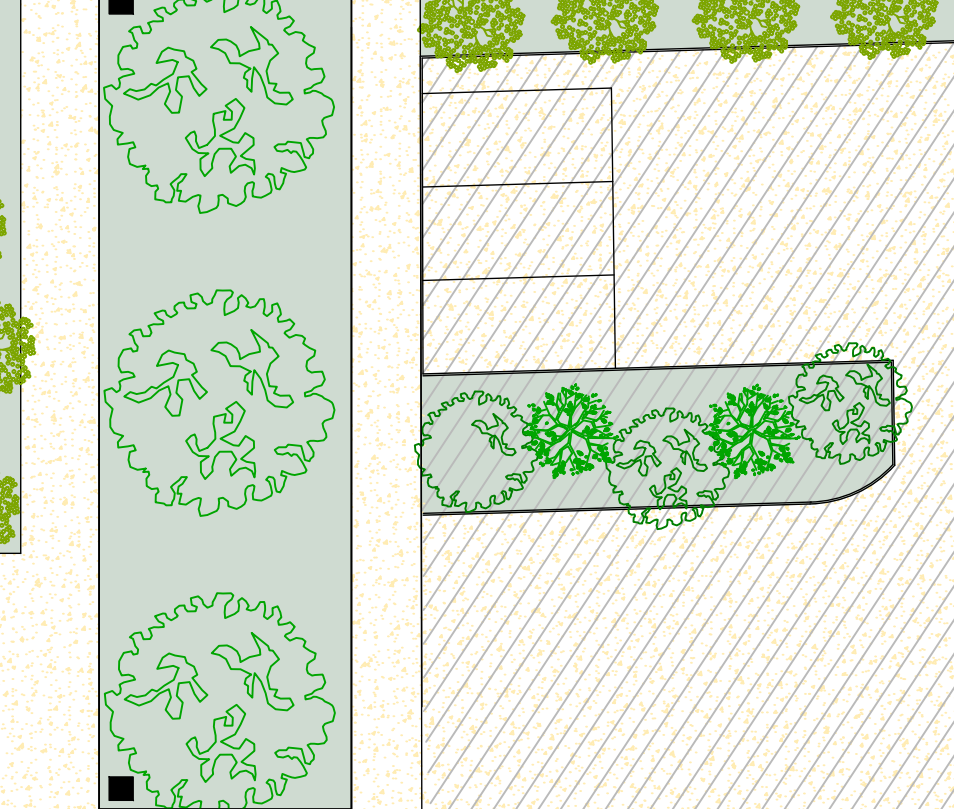
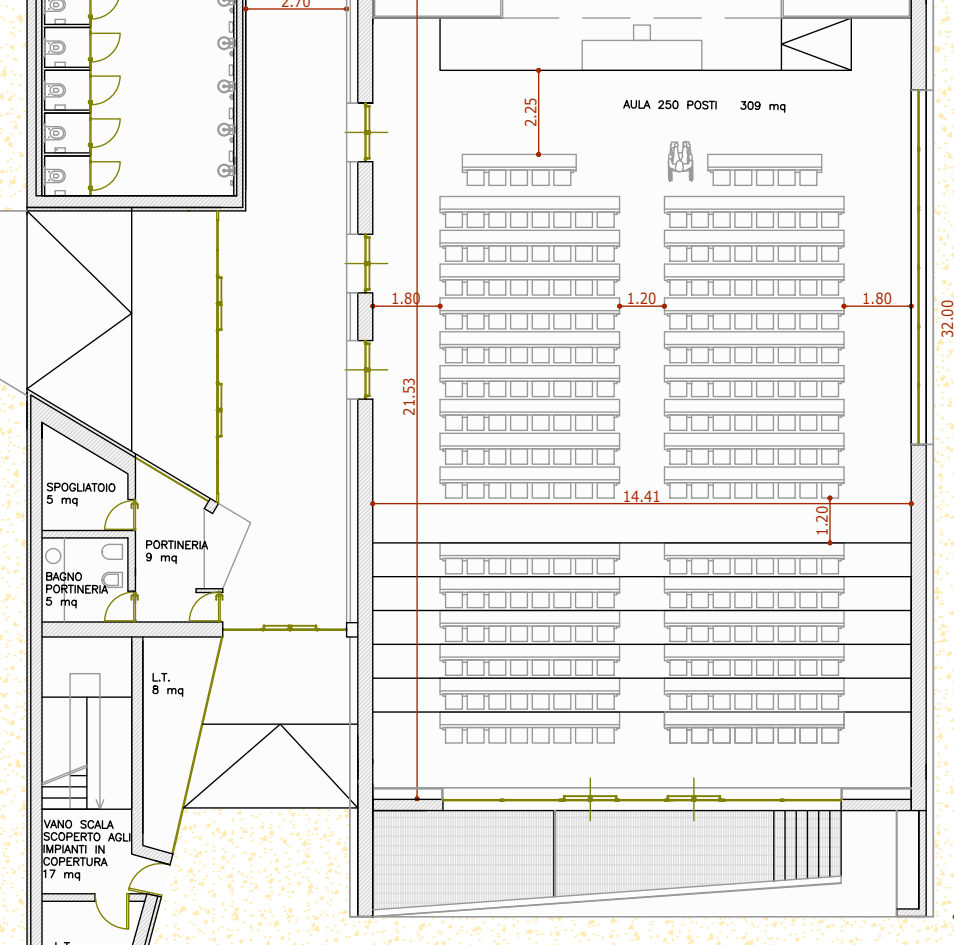
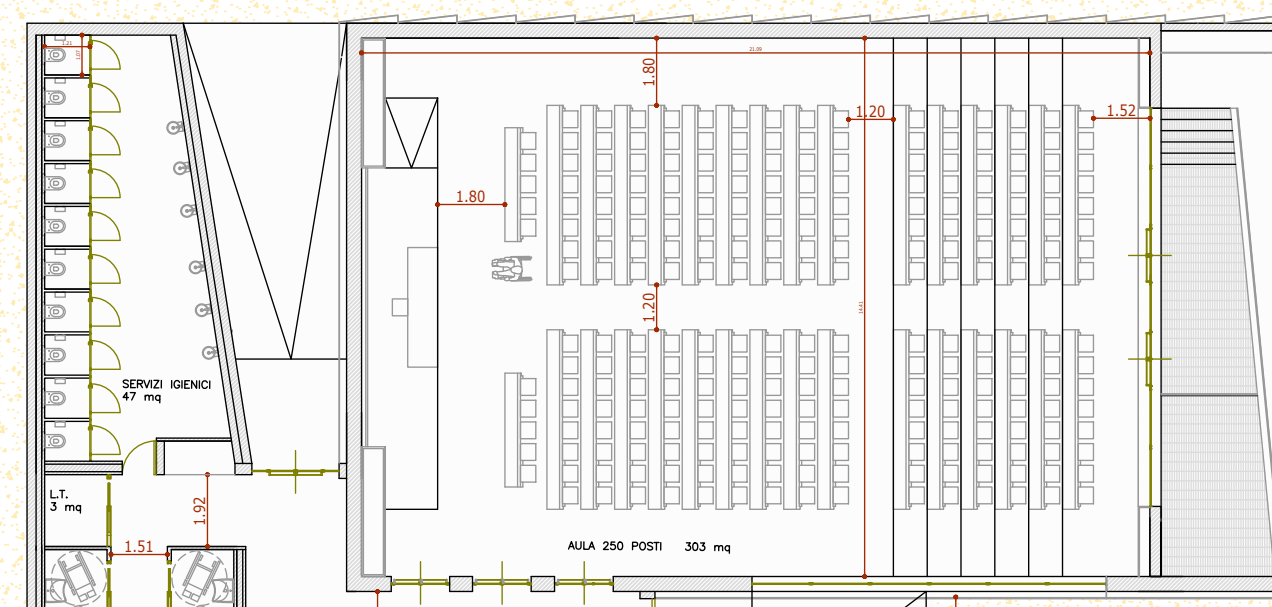
ALTA 200 POSTI 280 mq

ALTA 200 POSTI 280 mq

ALTA 200 POSTI 280 mq

ALTA 200 POSTI 280 mq

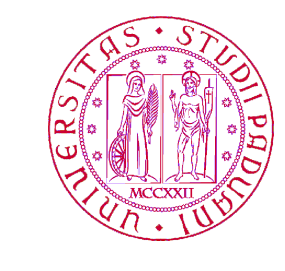
ALTA 200 POSTI 280 mq



PIANO PRIMO

ACCESSO PEDONALE DA VIA CAMPAGNOLA

AREA DI INTERVENTO FASE 2 DEL PIANO DI RECUPERO



UNIVERSITÀ DEGLI STUDI DI PADOVA

800 ANNI

COMPLESSO EX-S.E.E.F. VIA CAMPAGNOLA - PADOVA
PIANO DI RECUPERO

AREA EDILIZIA E SICUREZZA
Ufficio Sviluppo Edilizio

PADOVA - Palazzo S. Stefano - P.zza Antenore n.3
tel. 049/8273274 fax 049/8273269



cod.edif.: 01220

SEEF Via Campagnola

tav.: A04

STATO DI PROGETTO
Pianta piano terra e primo

data: 17-02-2020

scala: 1:200

disegnatori:

aggiorn.: 01-09-2020

nome file: 01220 A04A.dwg