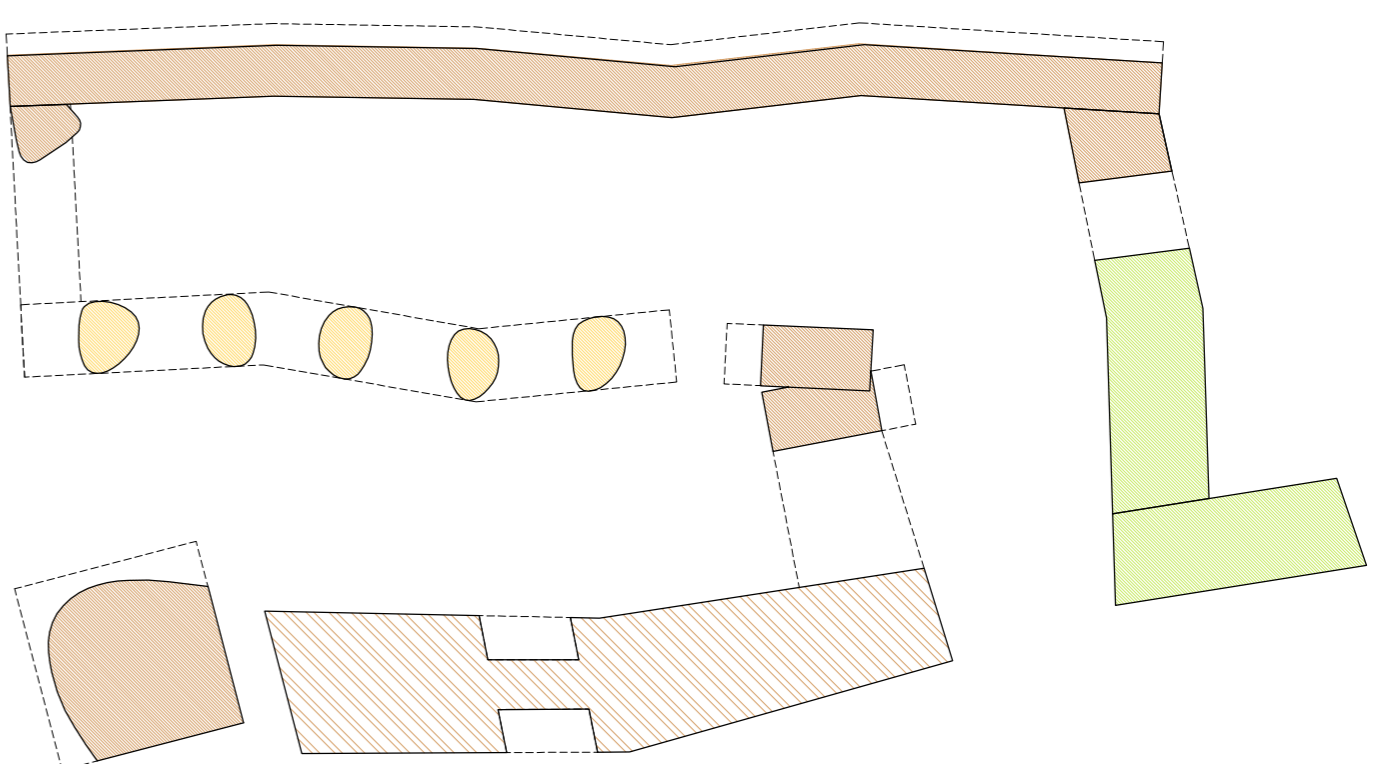
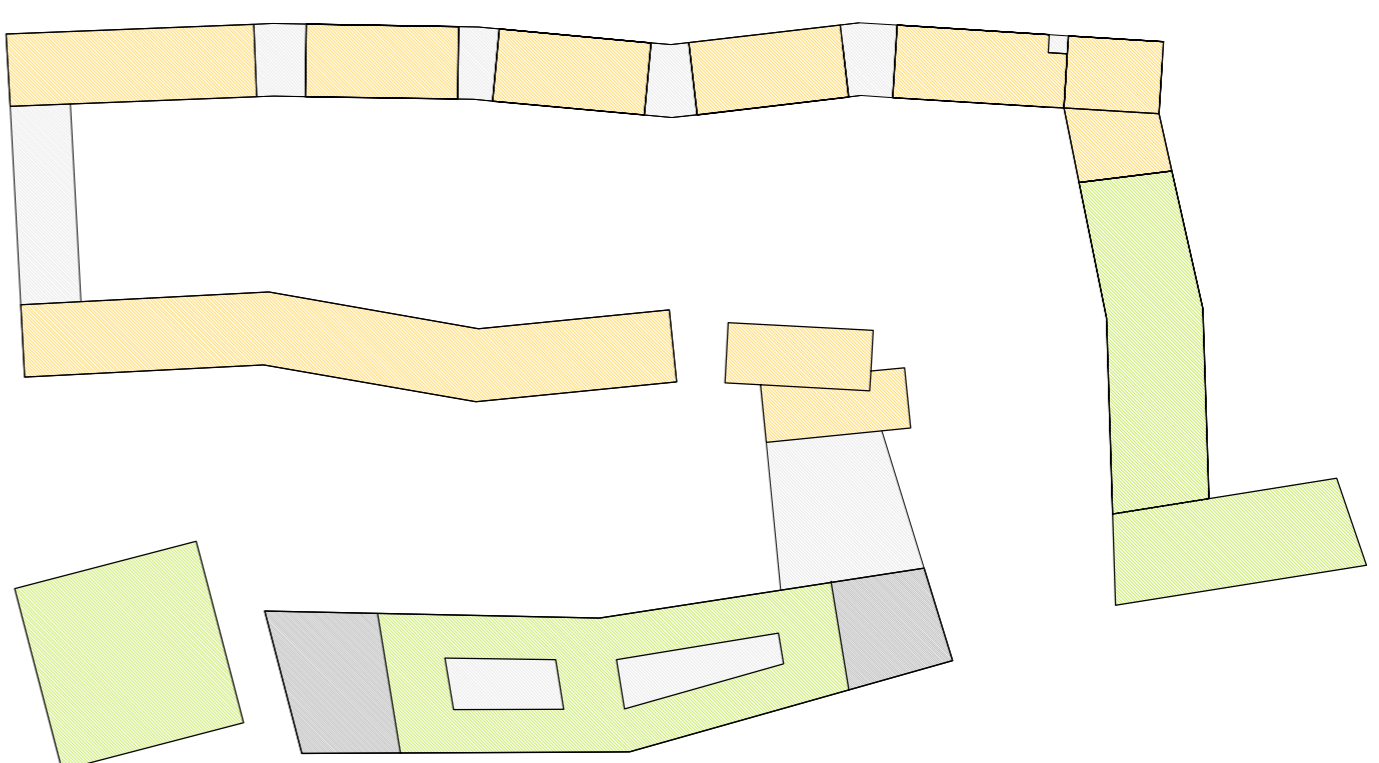


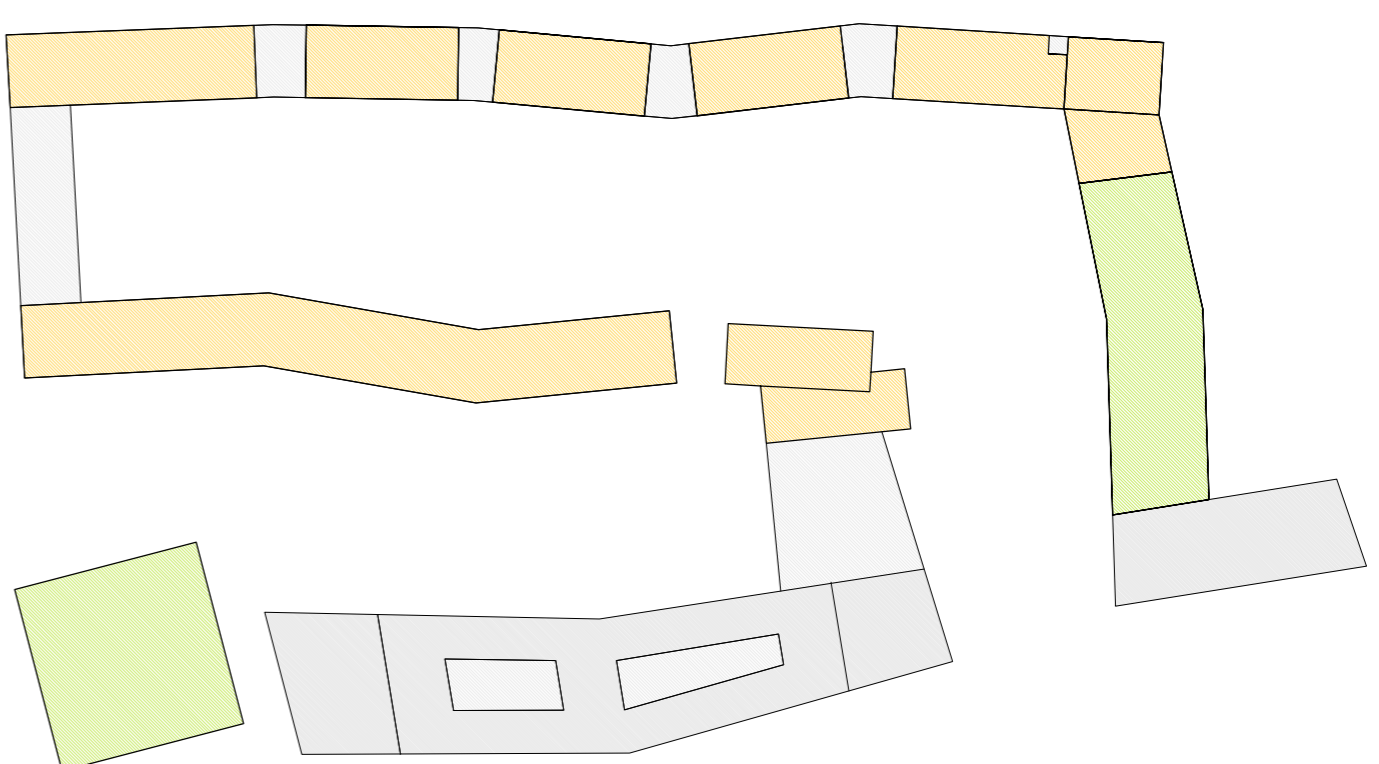
PIANO TERRA



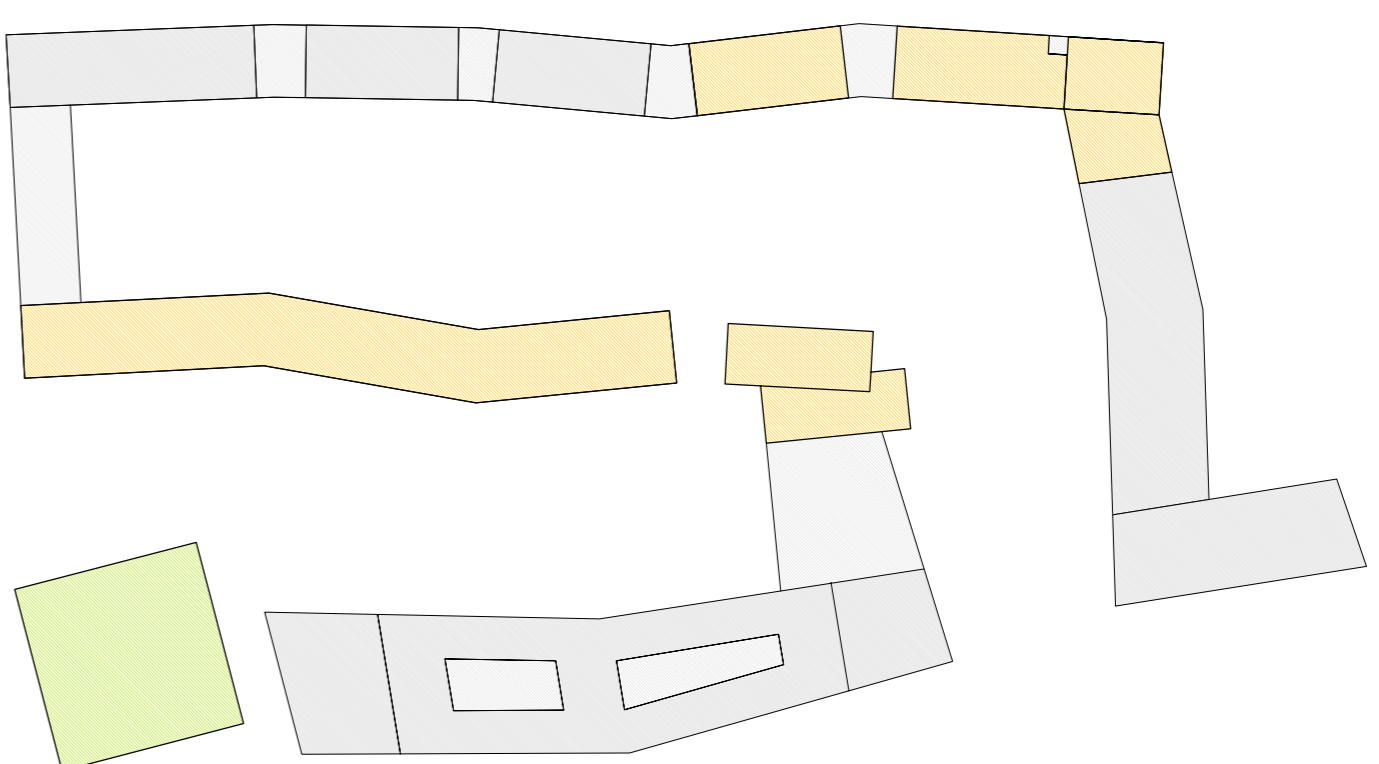
PIANO 1



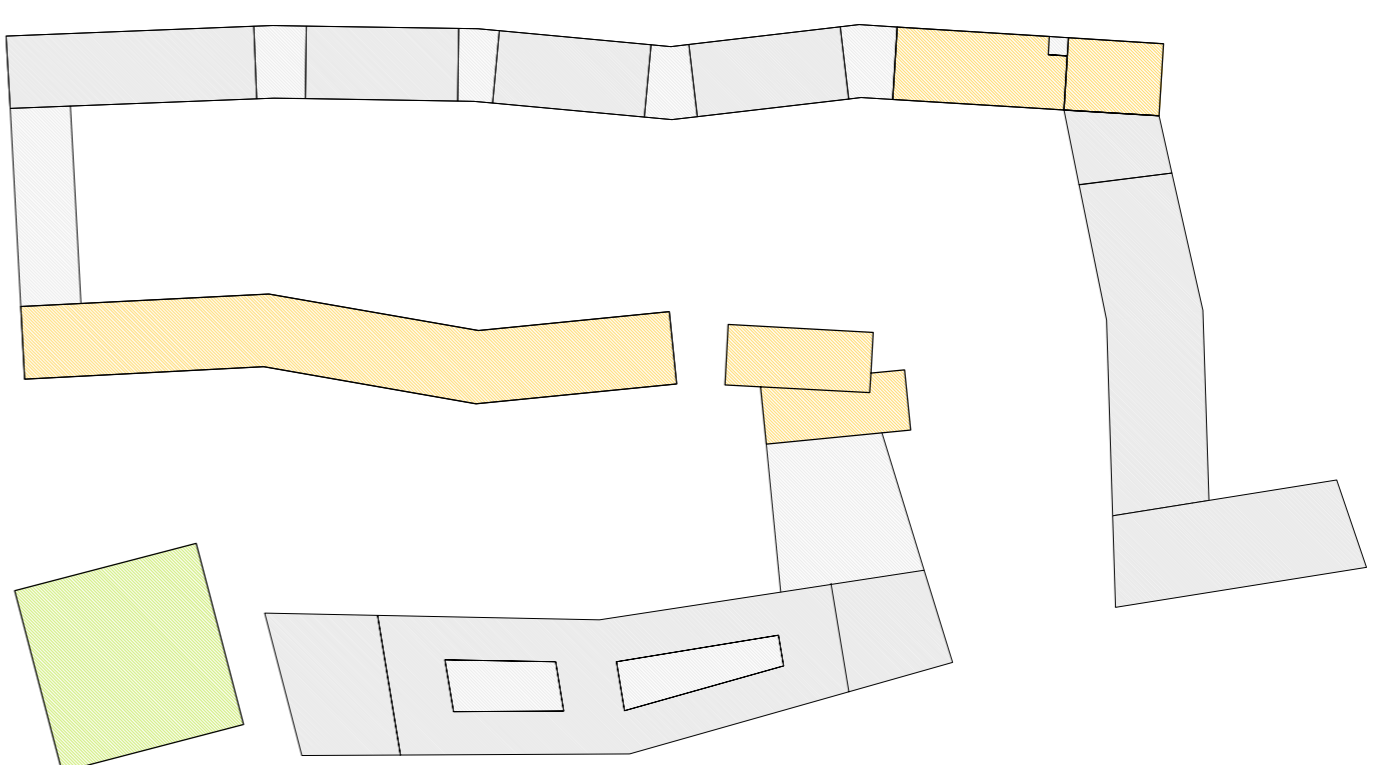
PIANO 2



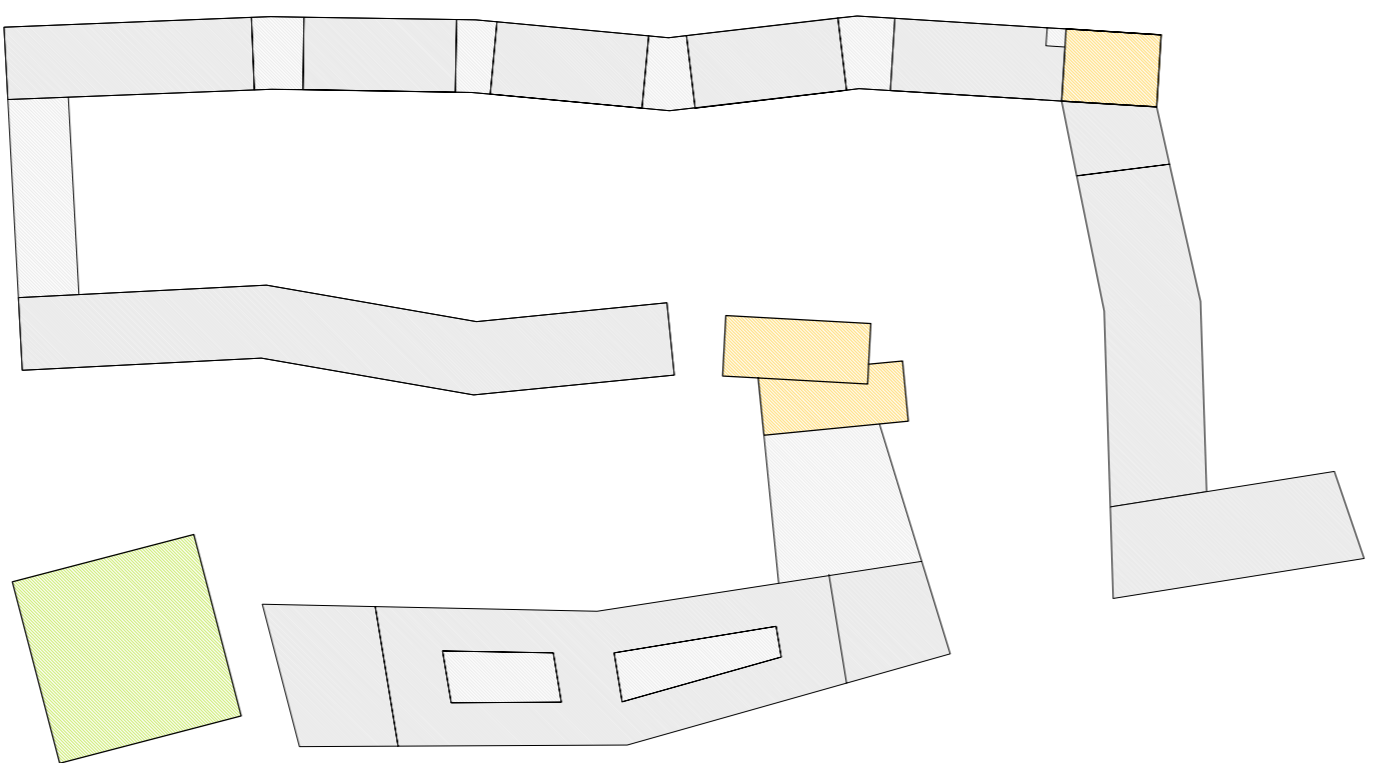
PIANO 3



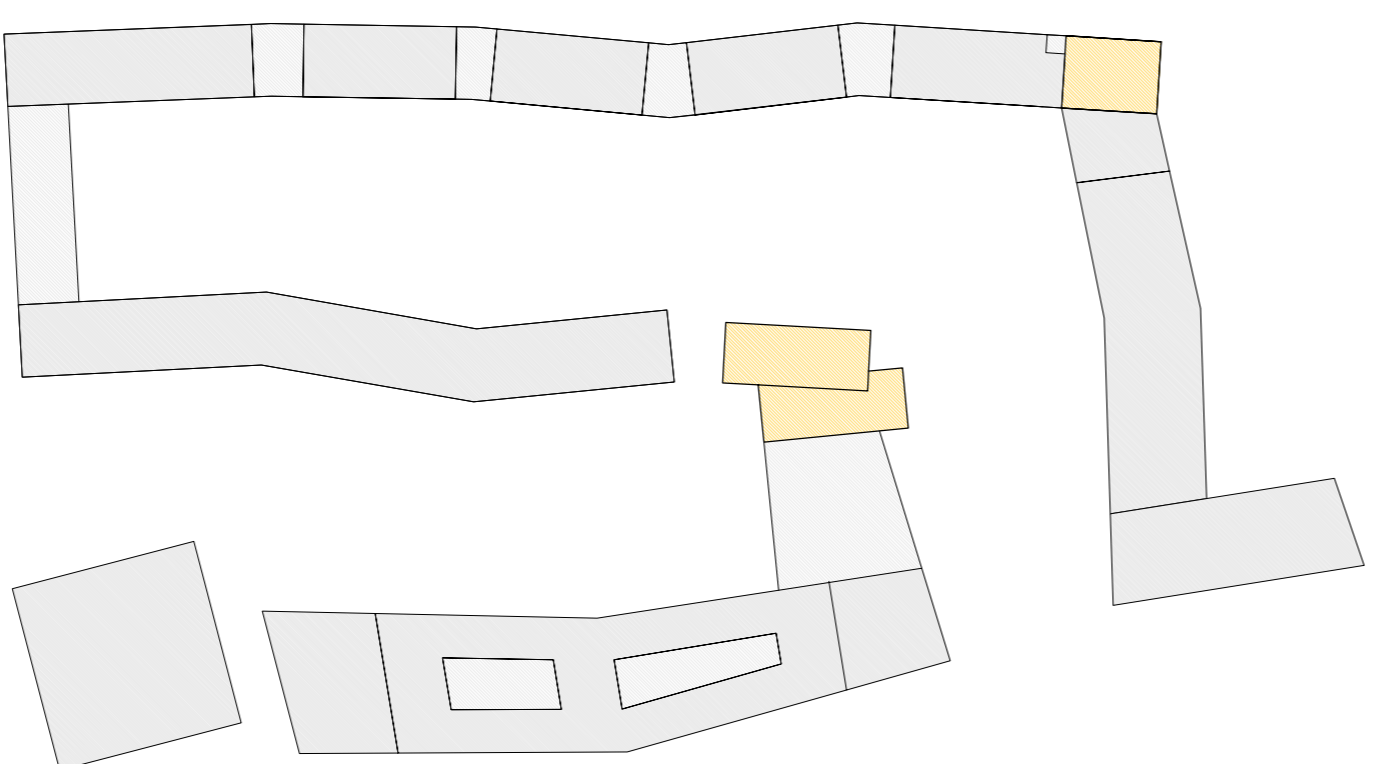
PIANO 4



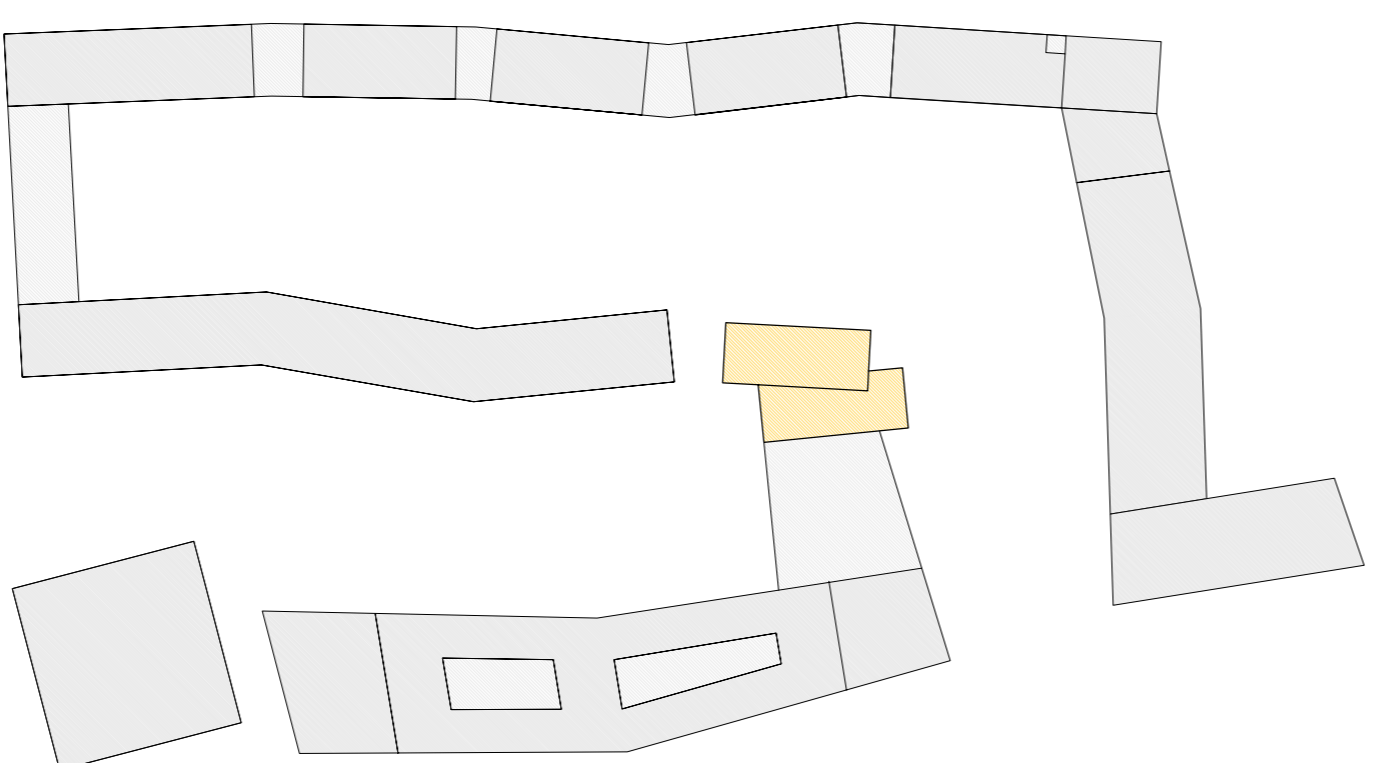
PIANO 5



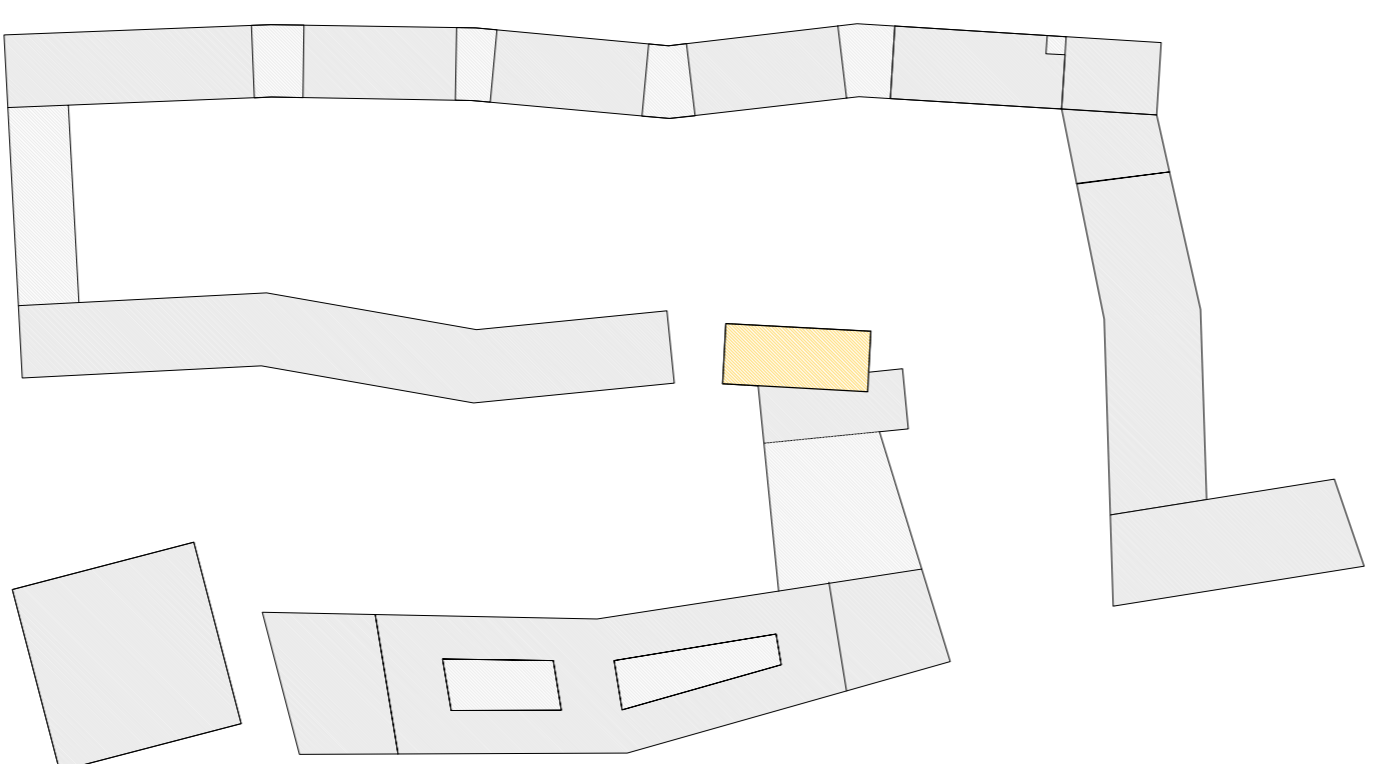
PIANI 6



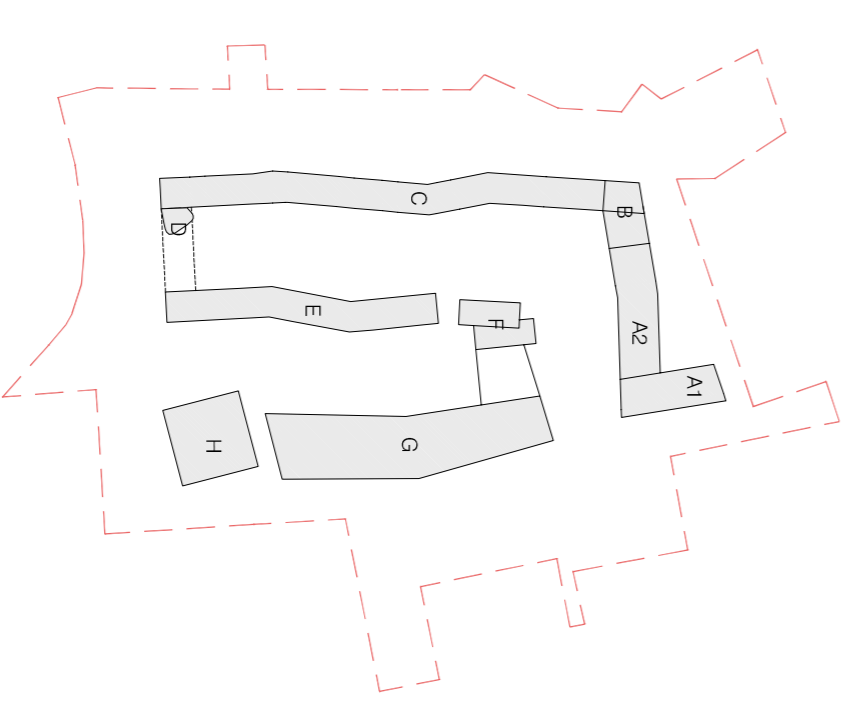
PIANI 7-10



PIANI 11-25



PIANI 26-30



NOTE:  
\*1. Negli schemi, le attribuzioni funzionali, le tipologie, le suddivisioni planimetriche ed i rapporti con i piani sono da considerarsi indicativi.

- LEGENDA:
- PERIMETRO DI AMBITO
  - PORTICI
  - OPERAZIONALE
  - COMMERCIALE
  - MEDIE STRUTTURE DIVENTIVA
  - RESIDENZIALE
  - VANITECNICI
  - COPERTURE