

RICHIESTA DI P.U.A. PER UN INTERVENTO DI DEMOLIZIONE E RICOSTRUZIONE CON AMPLIAMENTO AI SENSI DELLA L.R.14/2019 DI UN'AREA TRA VIA SARPI E VIA BELFIORE NEL COMUNE DI PADOVA (PD)

PROGETTAZIONE STUDIO ARCHIPOLIS ANTONIO VENTURATO - PIETRO REGAZZO ARCHITETTI

Table with 6 columns: COMMESSA, LIVELLO DI PROGETTAZIONE, TIPO ELABORATO, N° TAVOLA, REVISIONE, N°PIANO. Row 1: ARC, 04A, 08.

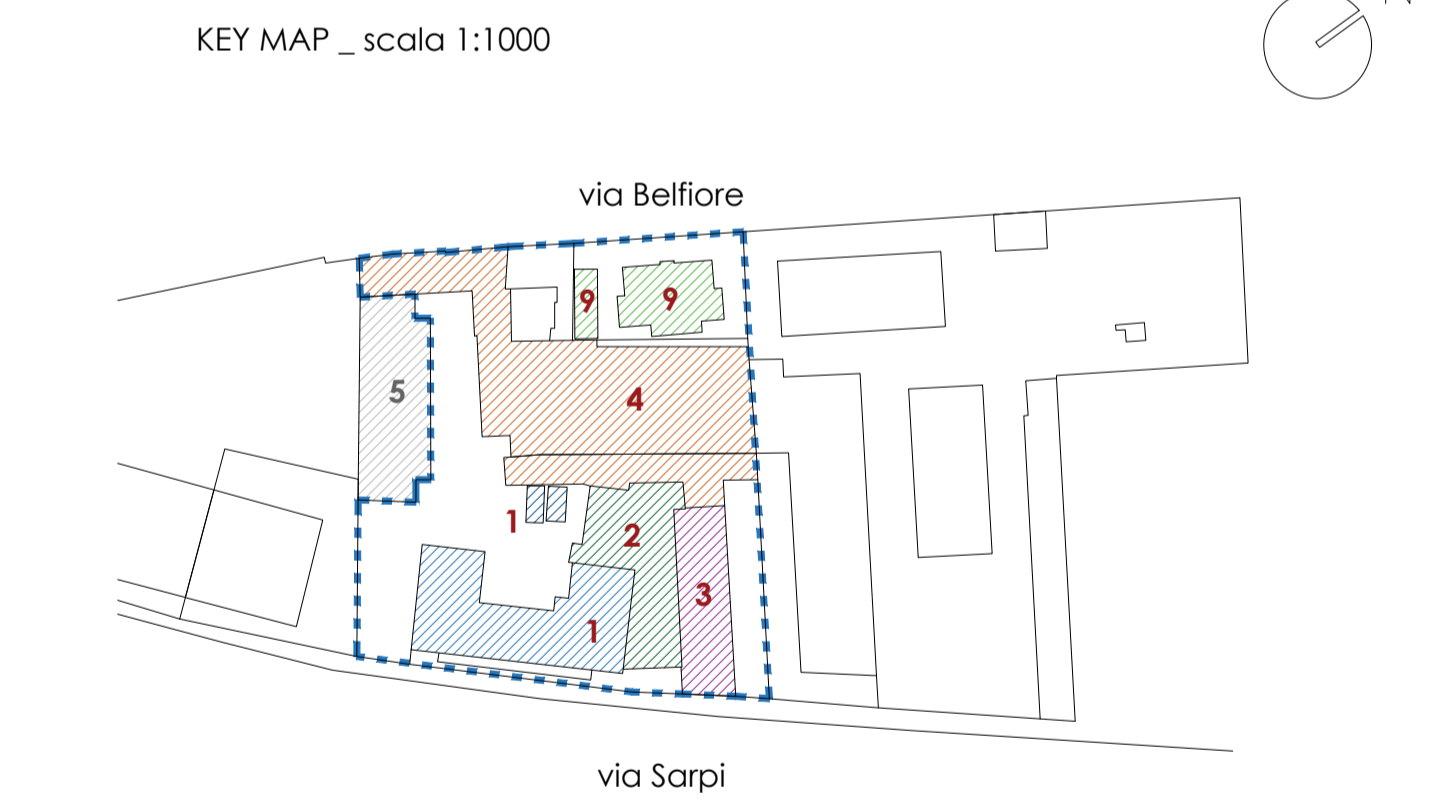
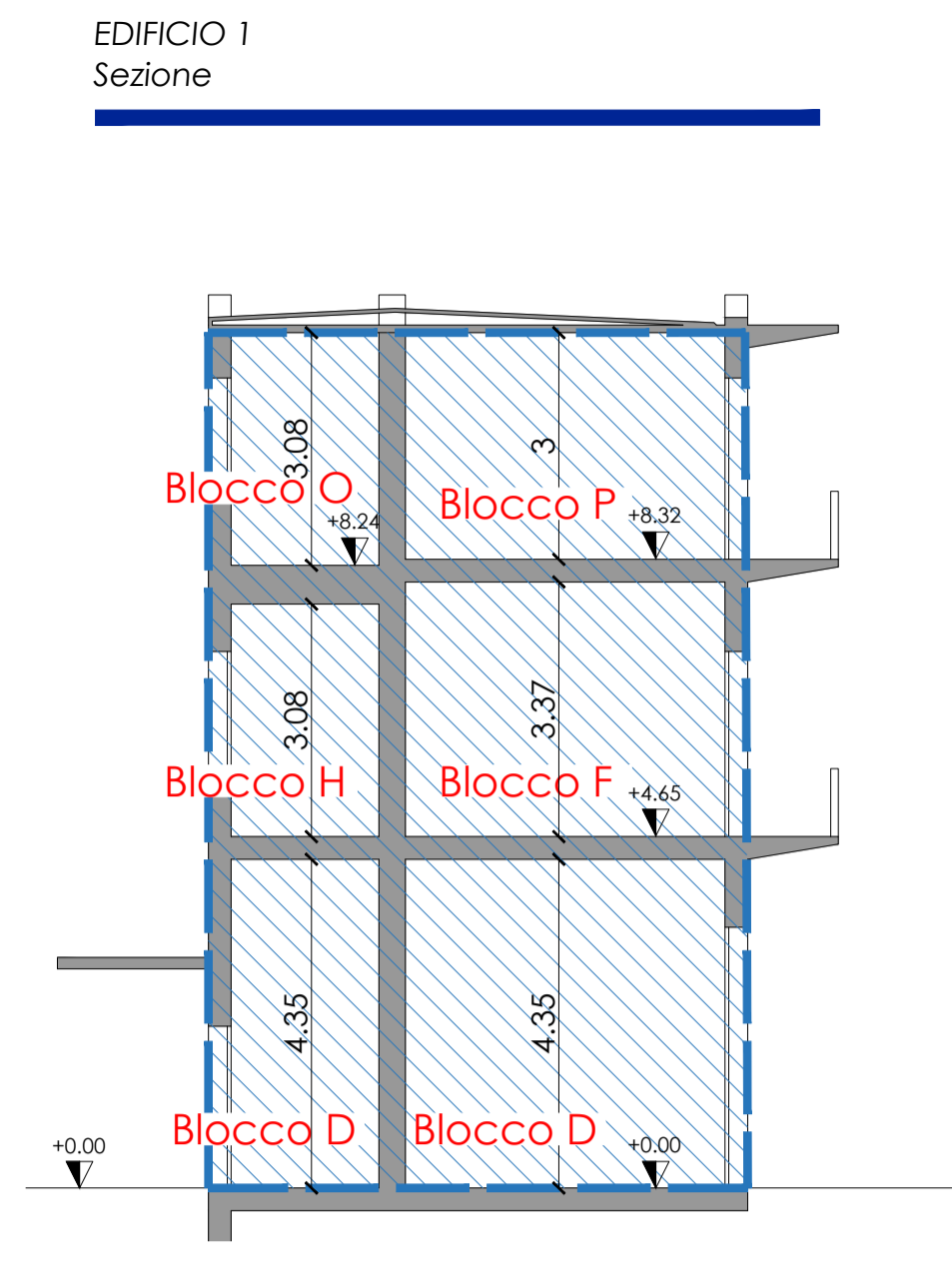
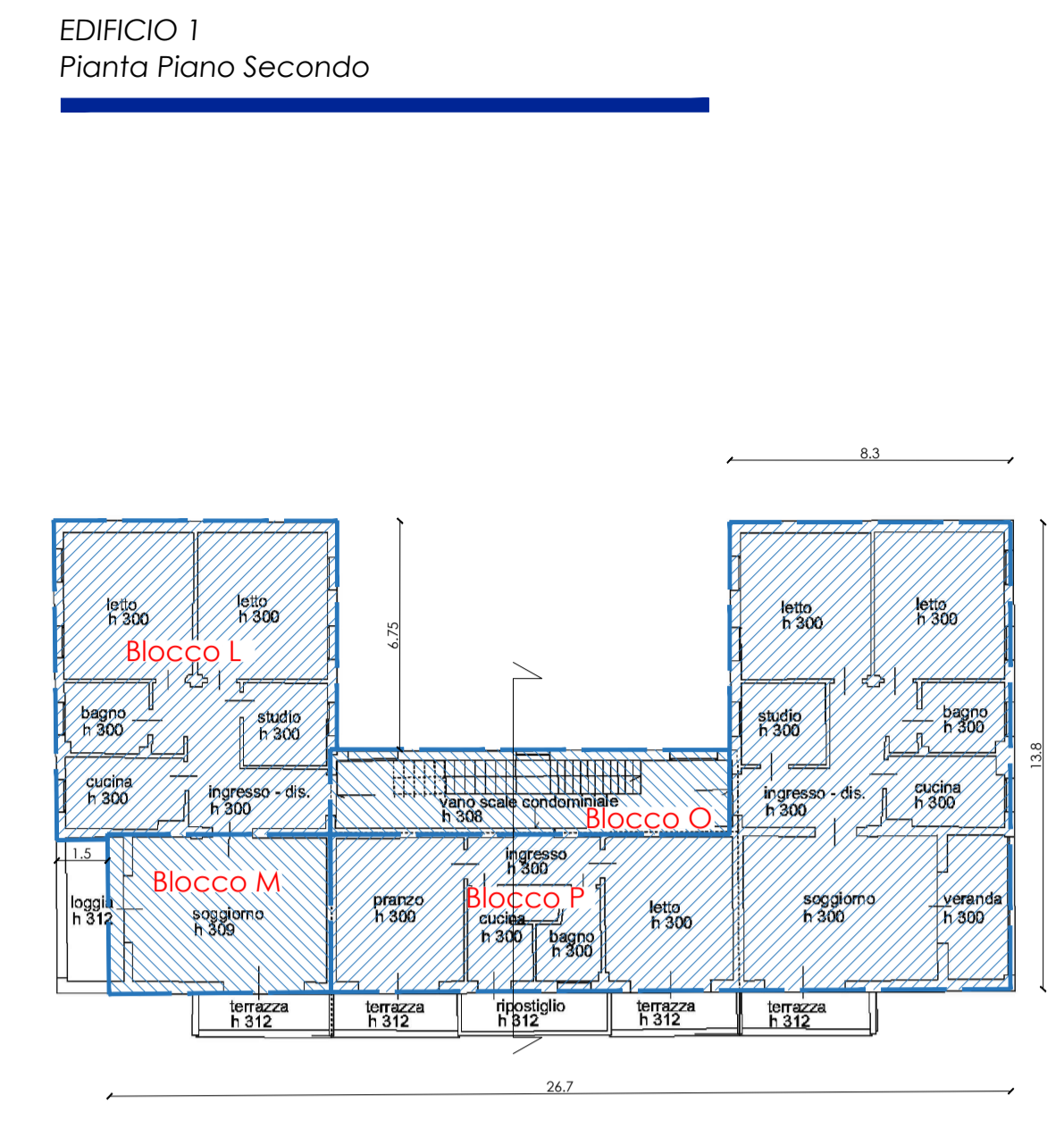
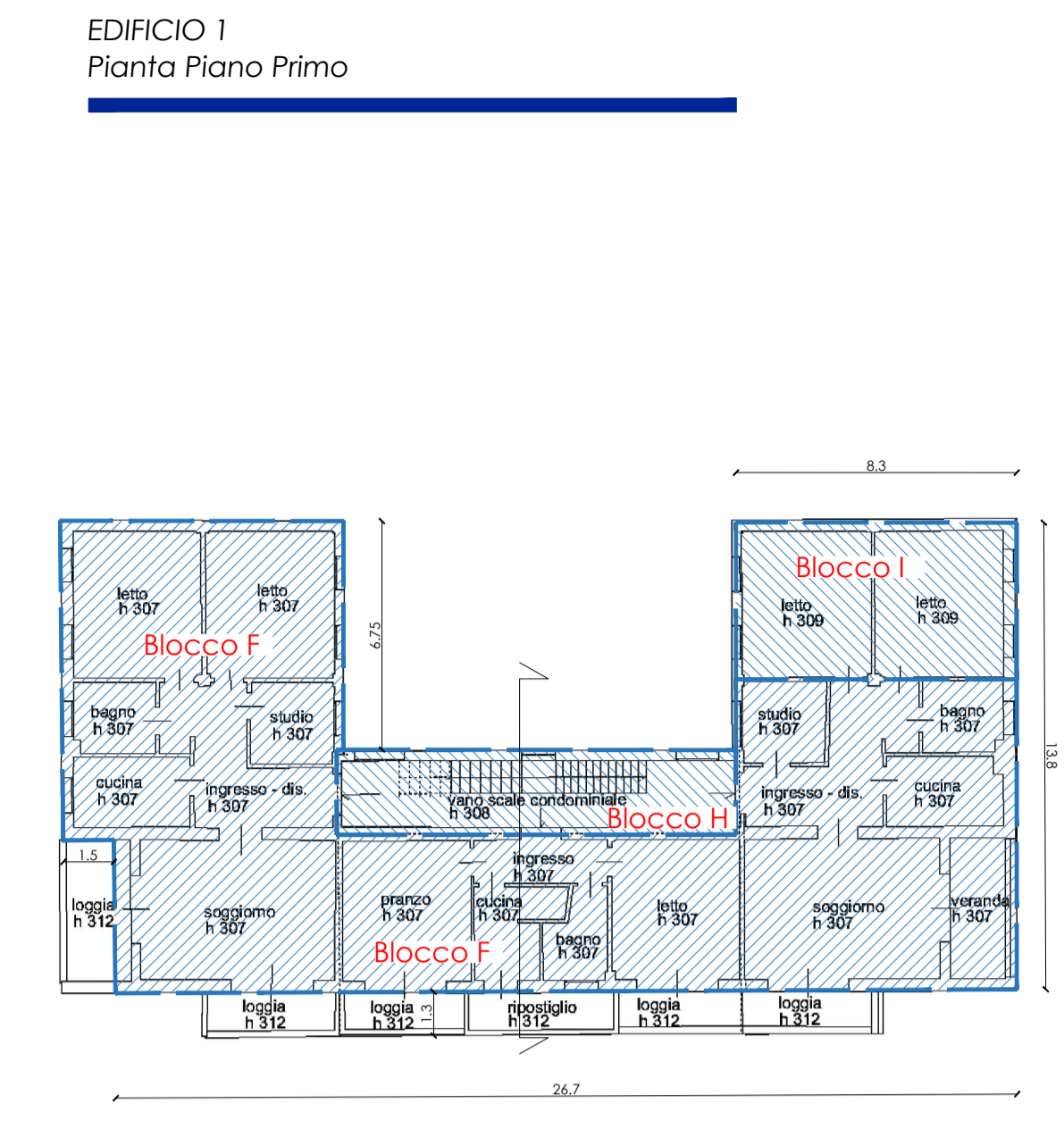
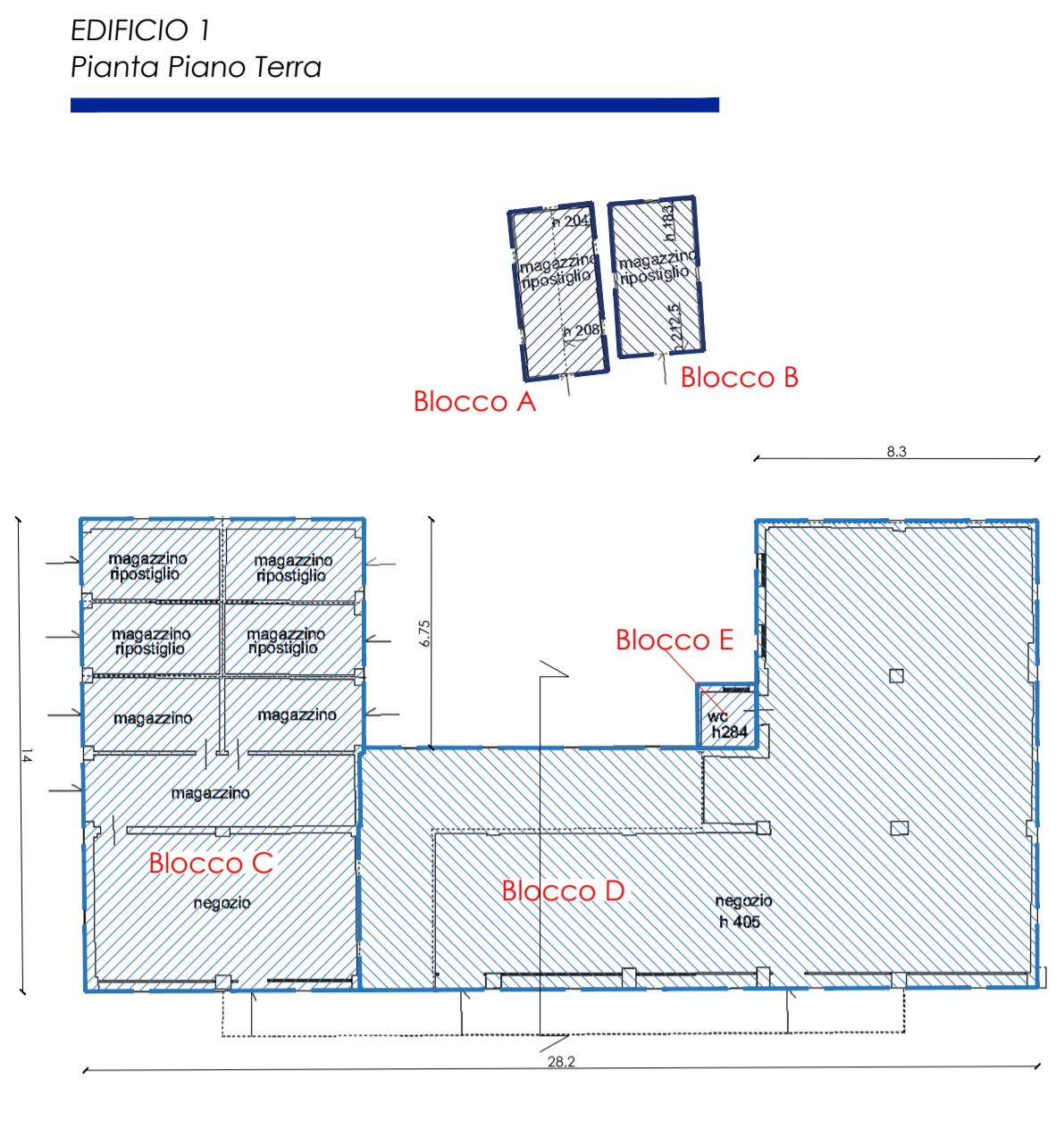


TABELLA RIEPILOGATIVA VOLUMI ESISTENTI AREA LEGITTIMATI. Table with 2 columns: EDIFICIO, VOLUME mc. Totale: 8.619,59.



Summary table for EDIFICIO 1 with columns: Blocco, Superficie, Altezza, Volume. Total: 3.381,76 mc.

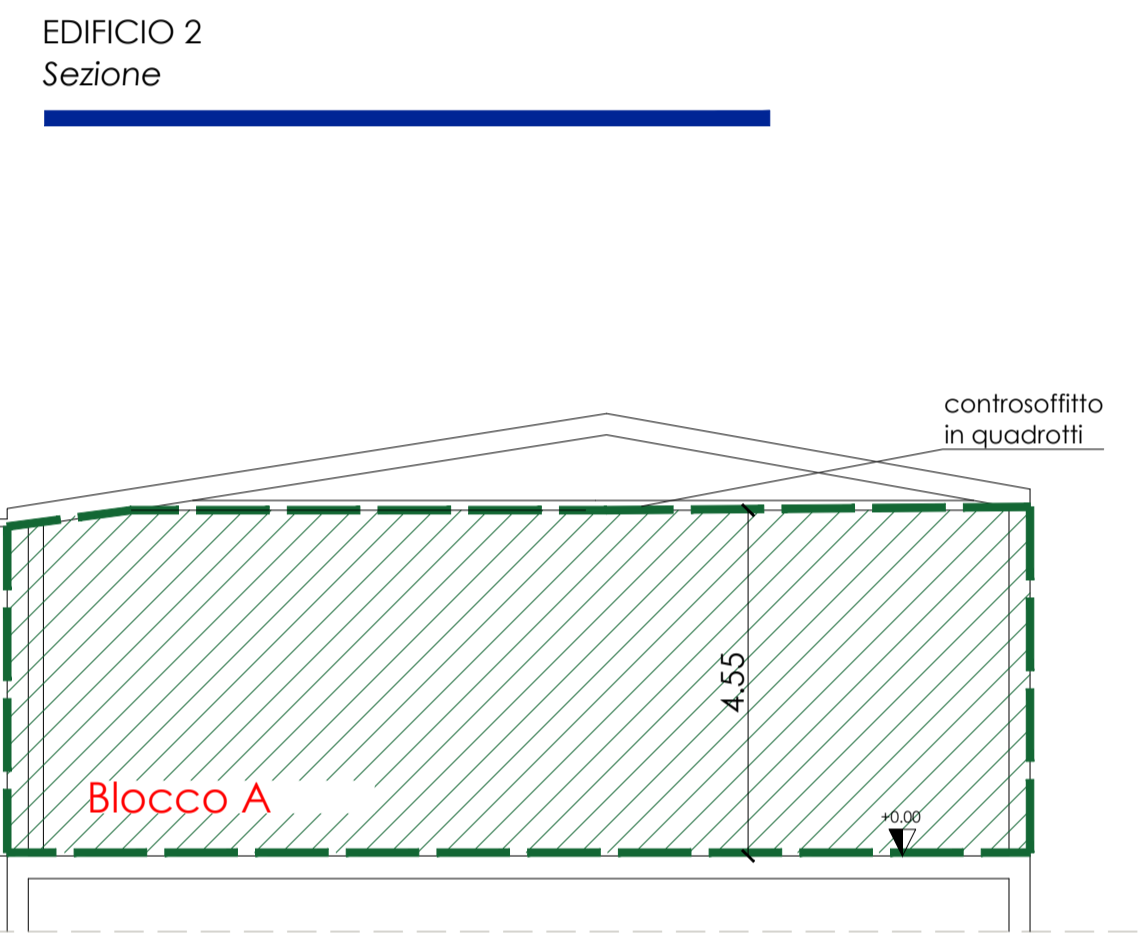
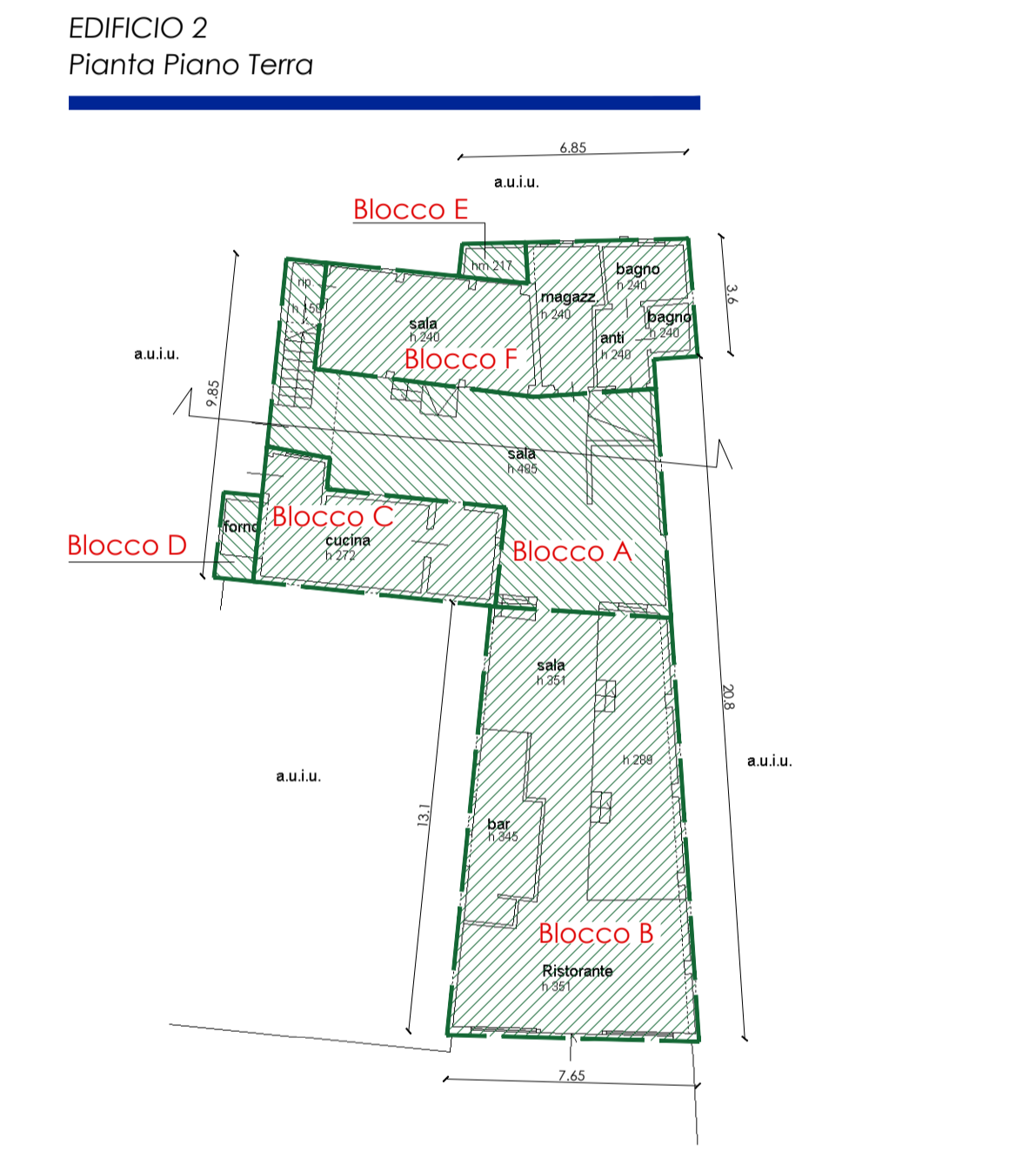


Table with 2 columns: Altezze reali, Altezze calcolate 3,00 ml. Summary of heights for EDIFICIO 2.

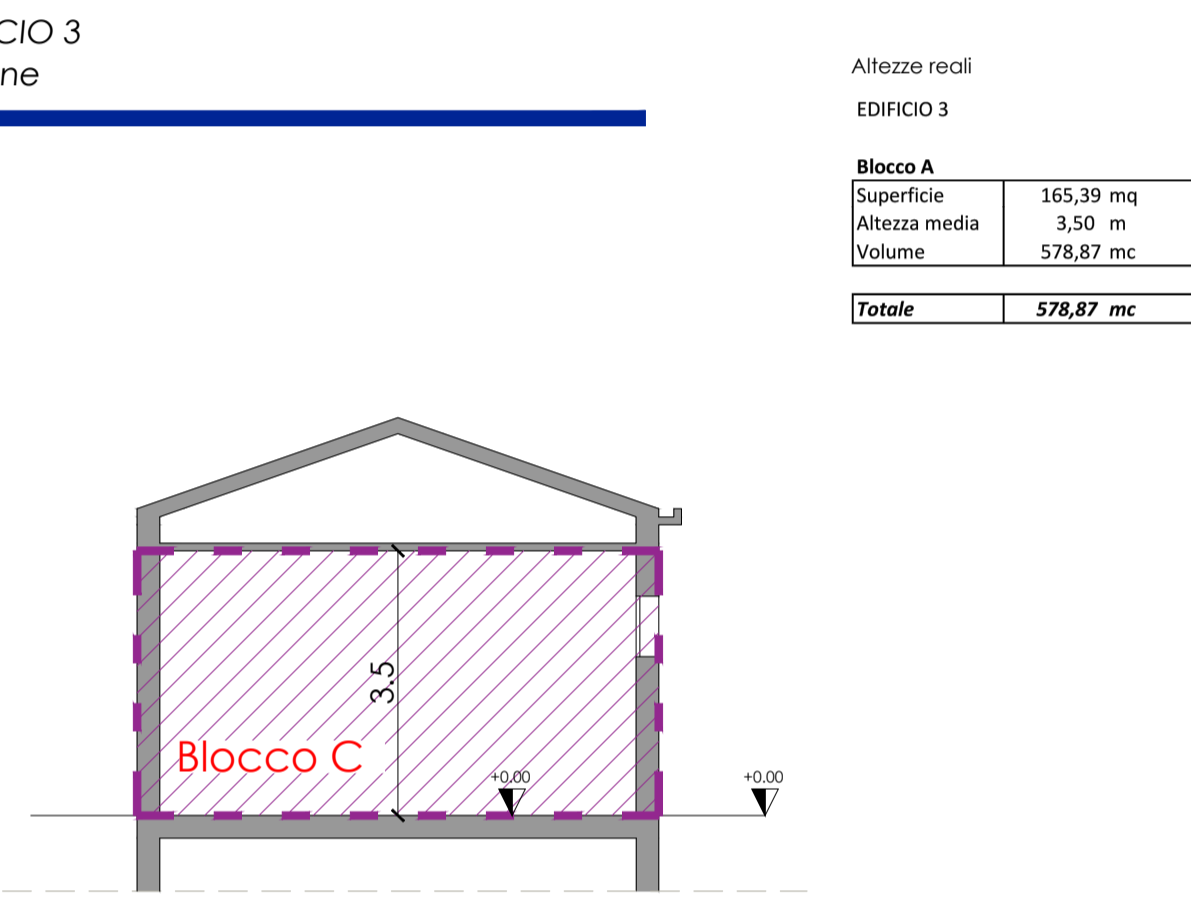
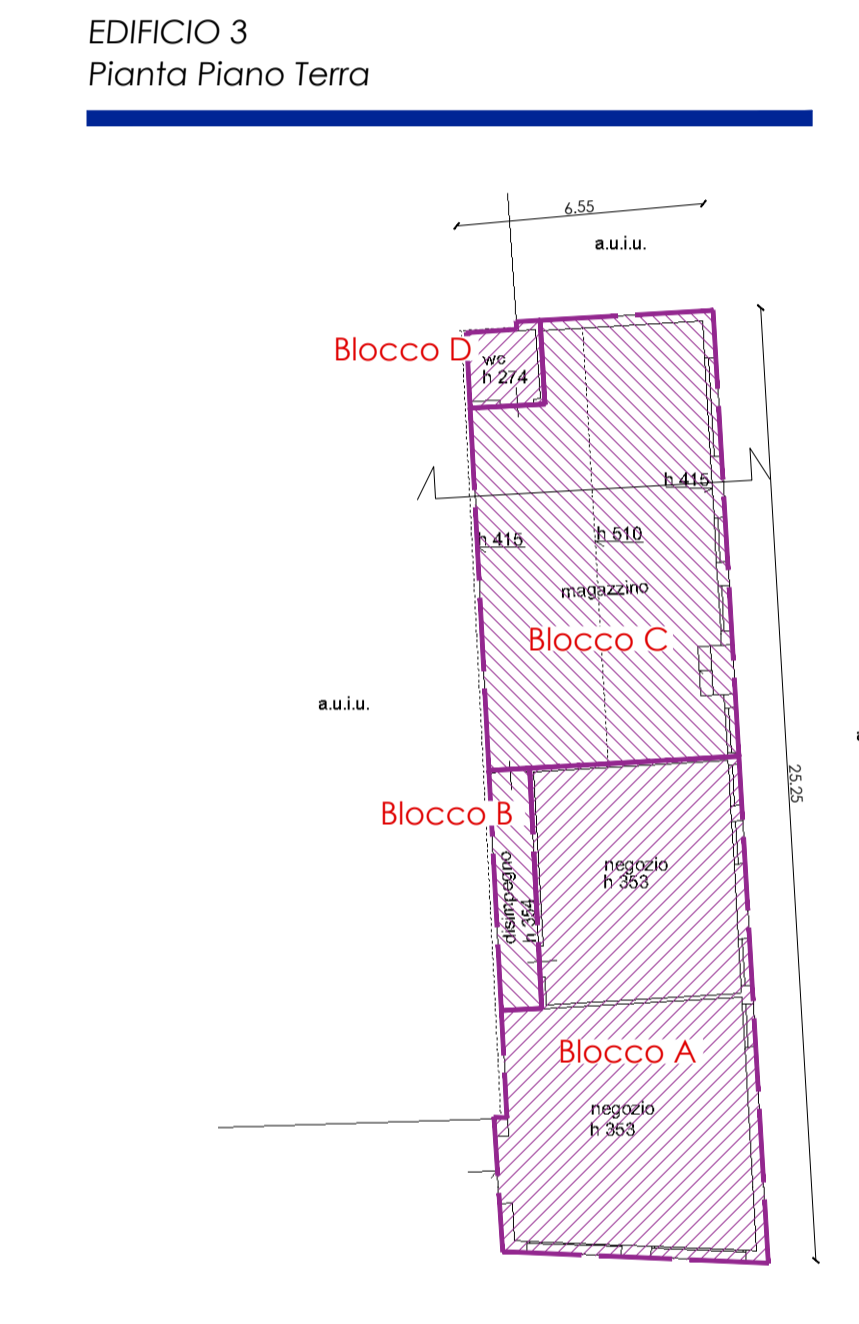


Table with 2 columns: Altezze reali, Altezze calcolate 3,00 ml. Summary of heights for EDIFICIO 3.

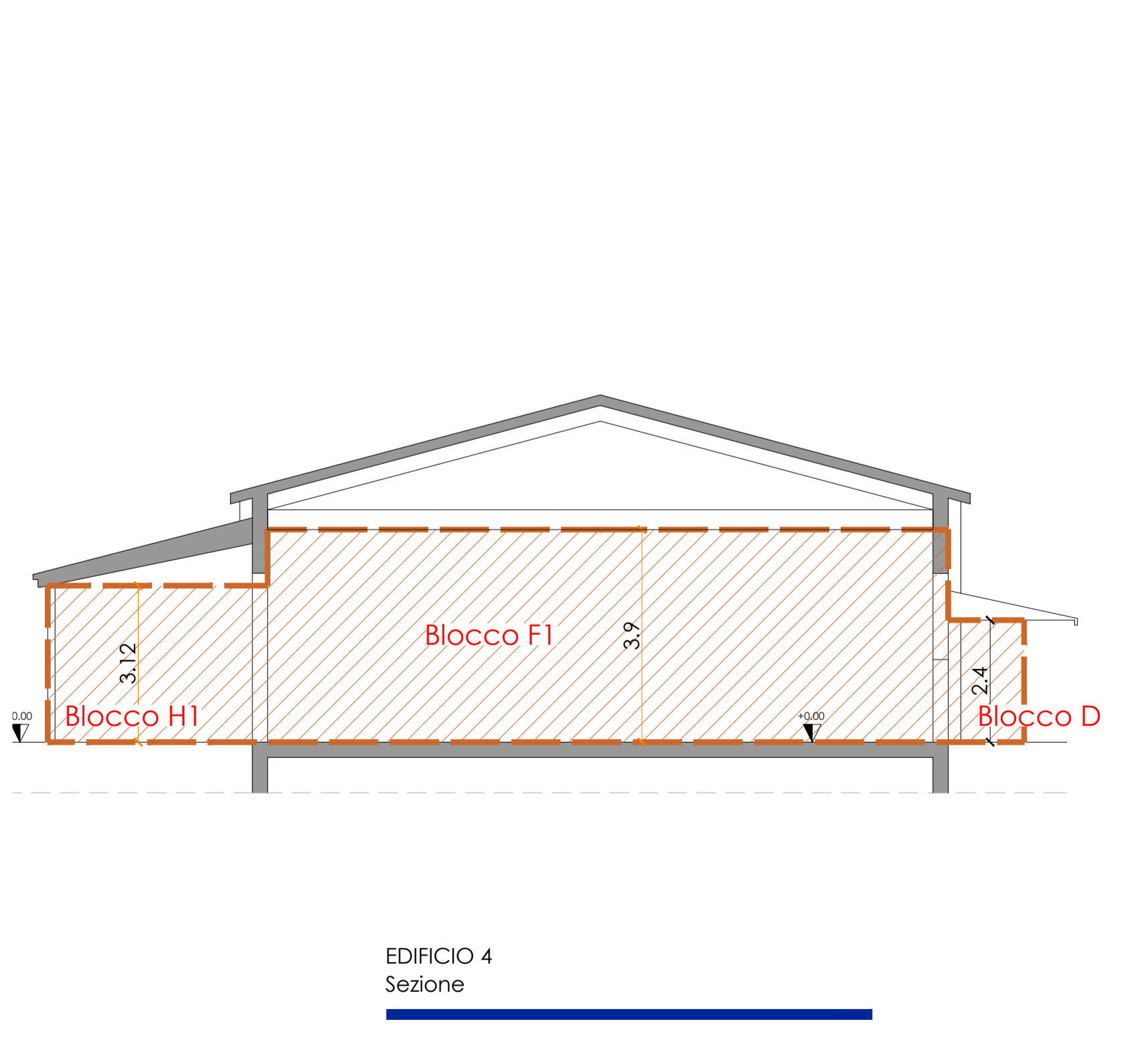
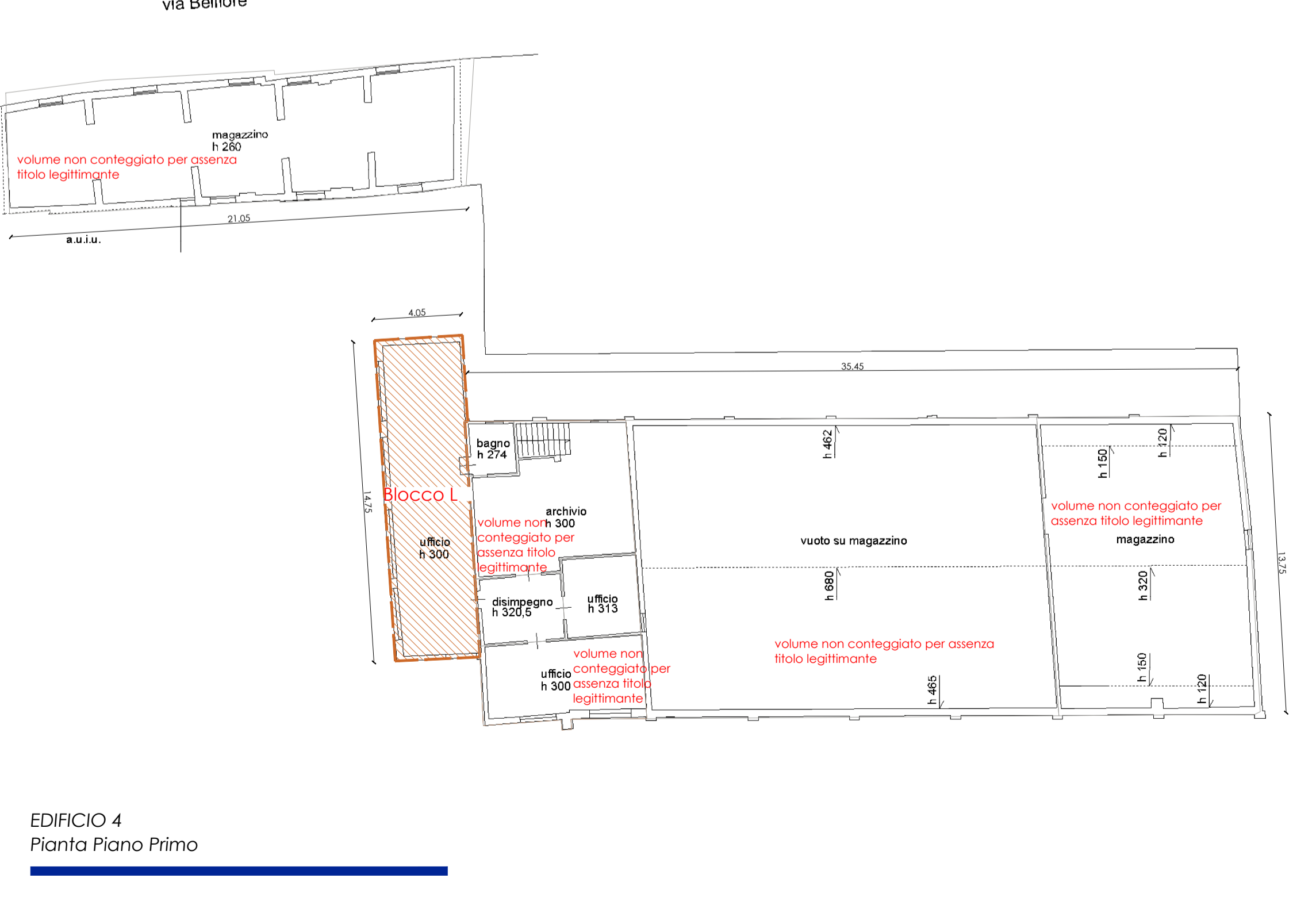
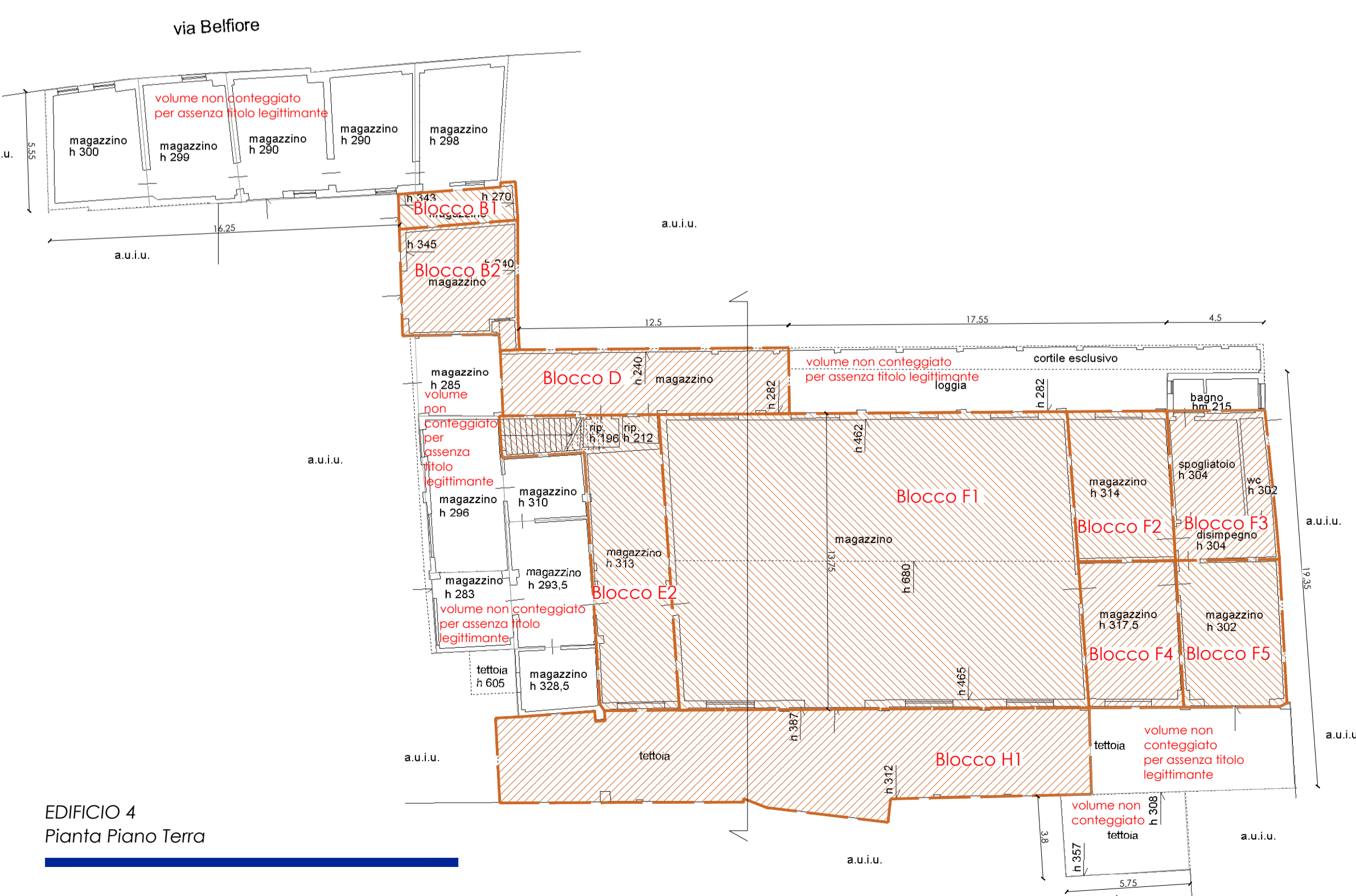


Table with 2 columns: Altezze reali, Altezze calcolate 3,00 ml. Summary of heights for EDIFICIO 4.

QUESTO DOCUMENTO NON POTRA' ESSERE COPIATO, RIPRODOTTO O ALTRIMENTI PUBBLICATO IN TUTTO O IN PARTE SENZA IL CONSENSO DEL PROGETTISTA (Ingegn. Z.Z.A. n. 633)