

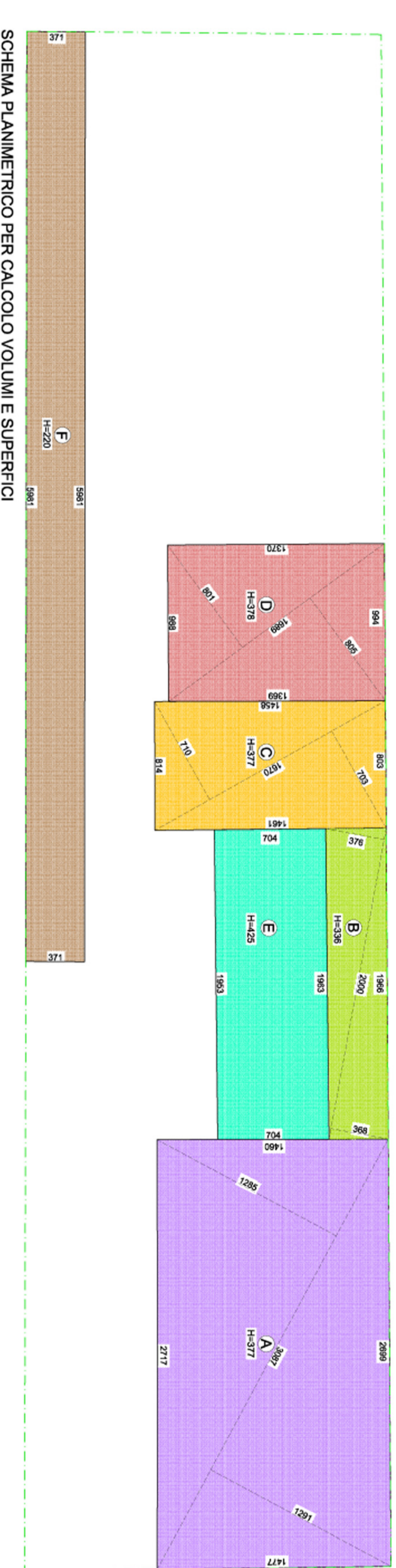
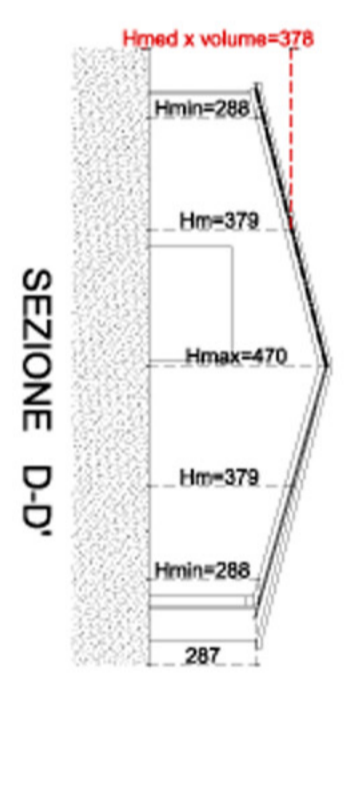
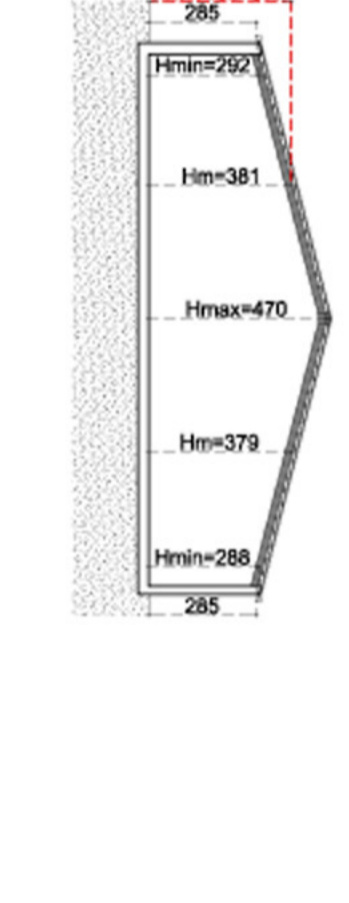
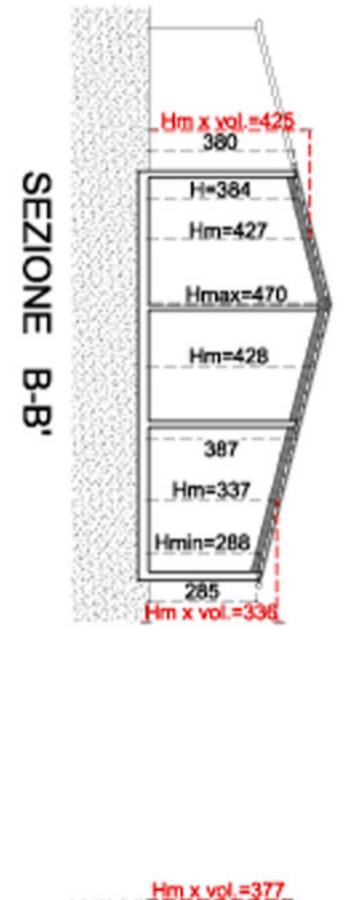
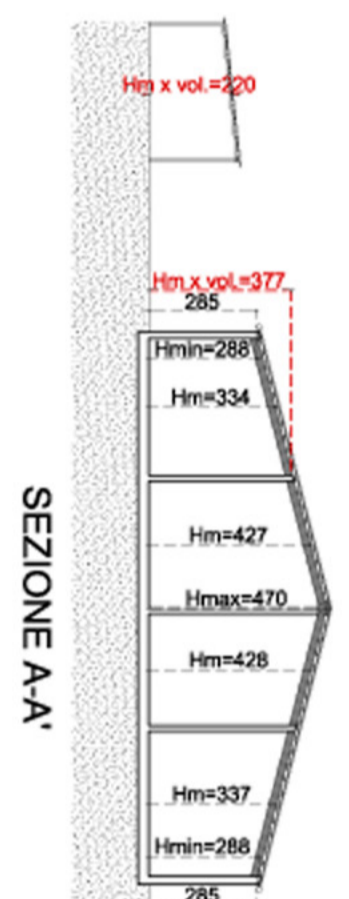
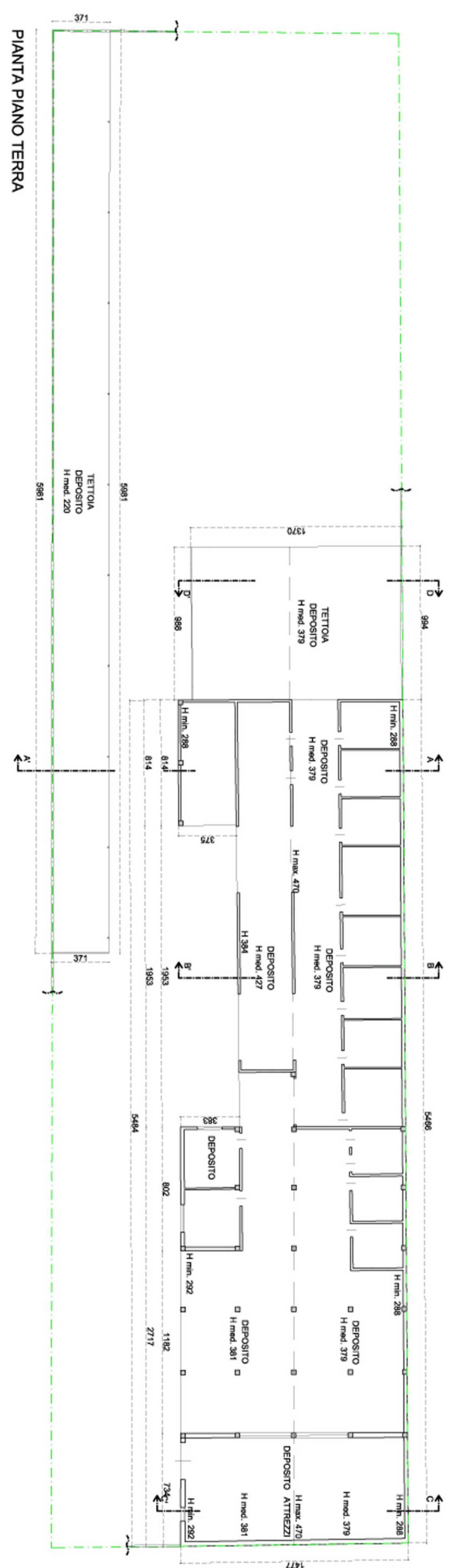
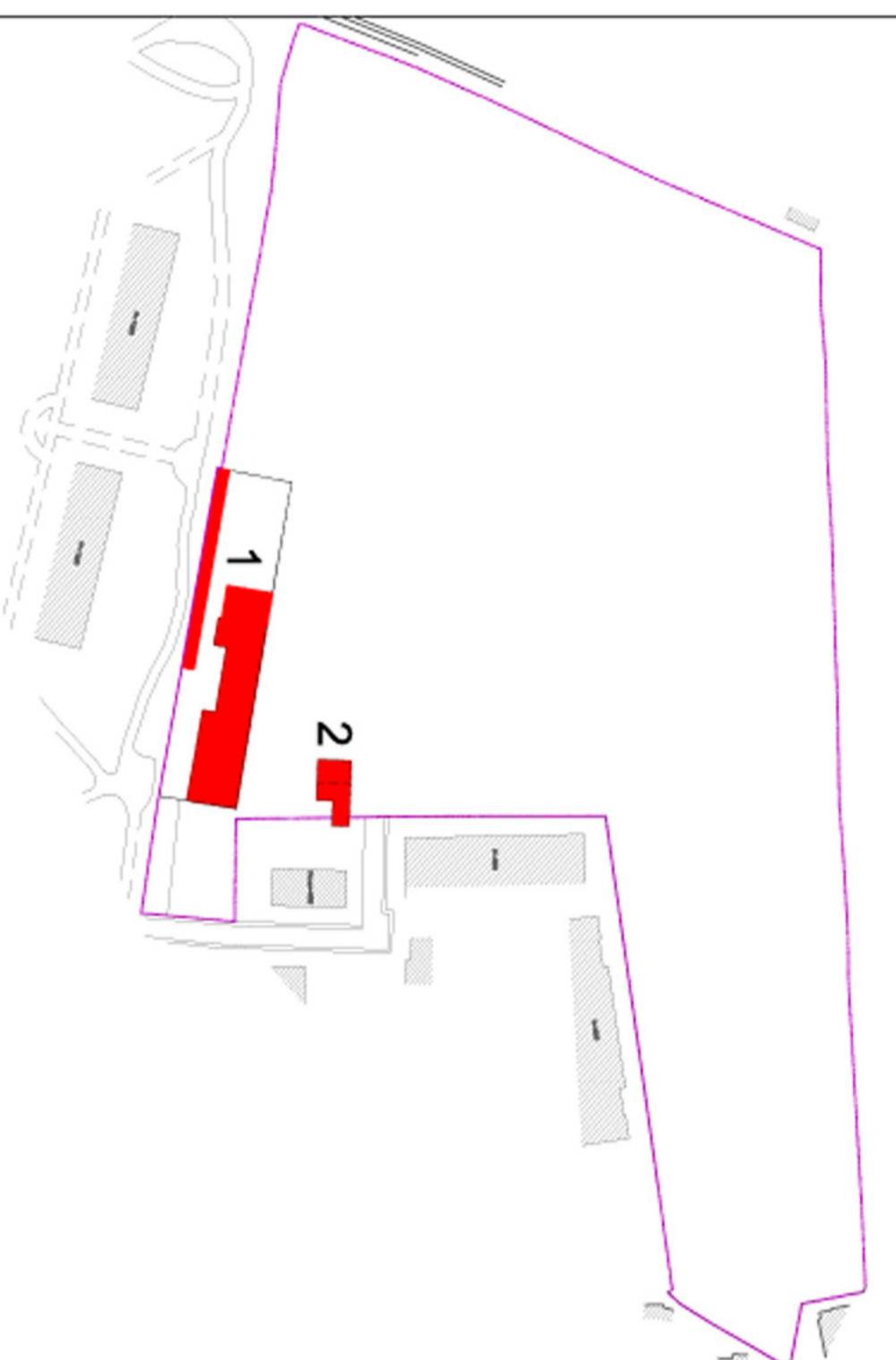
COMUNE DI PADOVA  
PIANO DI PEREQUAZIONE INTEGRATA  
IN ZONA MONTA' VIA CORONELLI

TAV. 03  
scala 1: 200

rilievo edifici esistenti

STUDIO TECNICO GRON. CAVARELLO MUGERLE  
Topografia ed elaborazioni grafiche  
VIA PADOVA NUM. 5/5 (P) - tel. 049.9399338

STUDIO SIBOTTI INGEGNERIA-ARCHITETTURA  
C.so 888 PAVOLA 6 (P) - tel. 049.9399338  
E-MAIL: info@studiocibotti.com



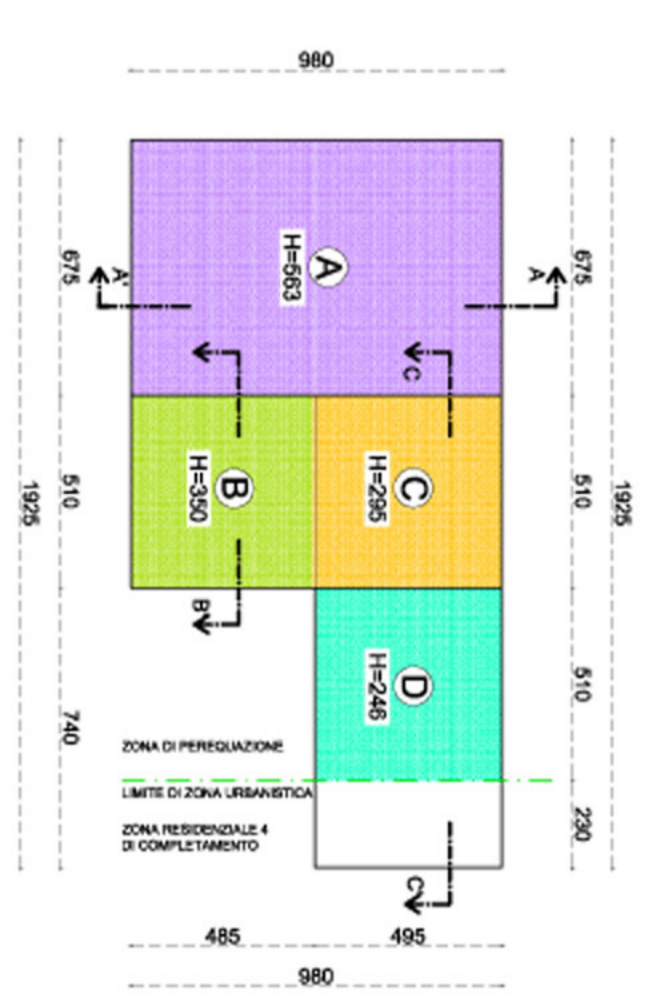
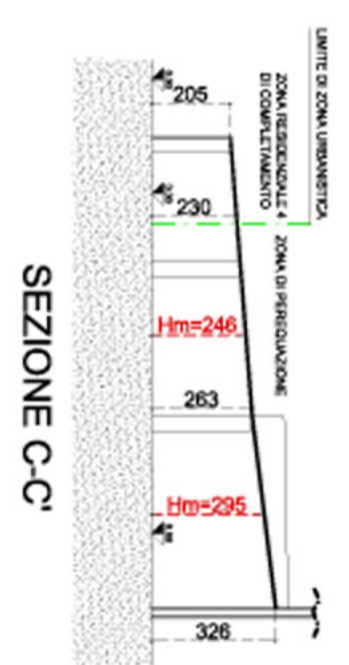
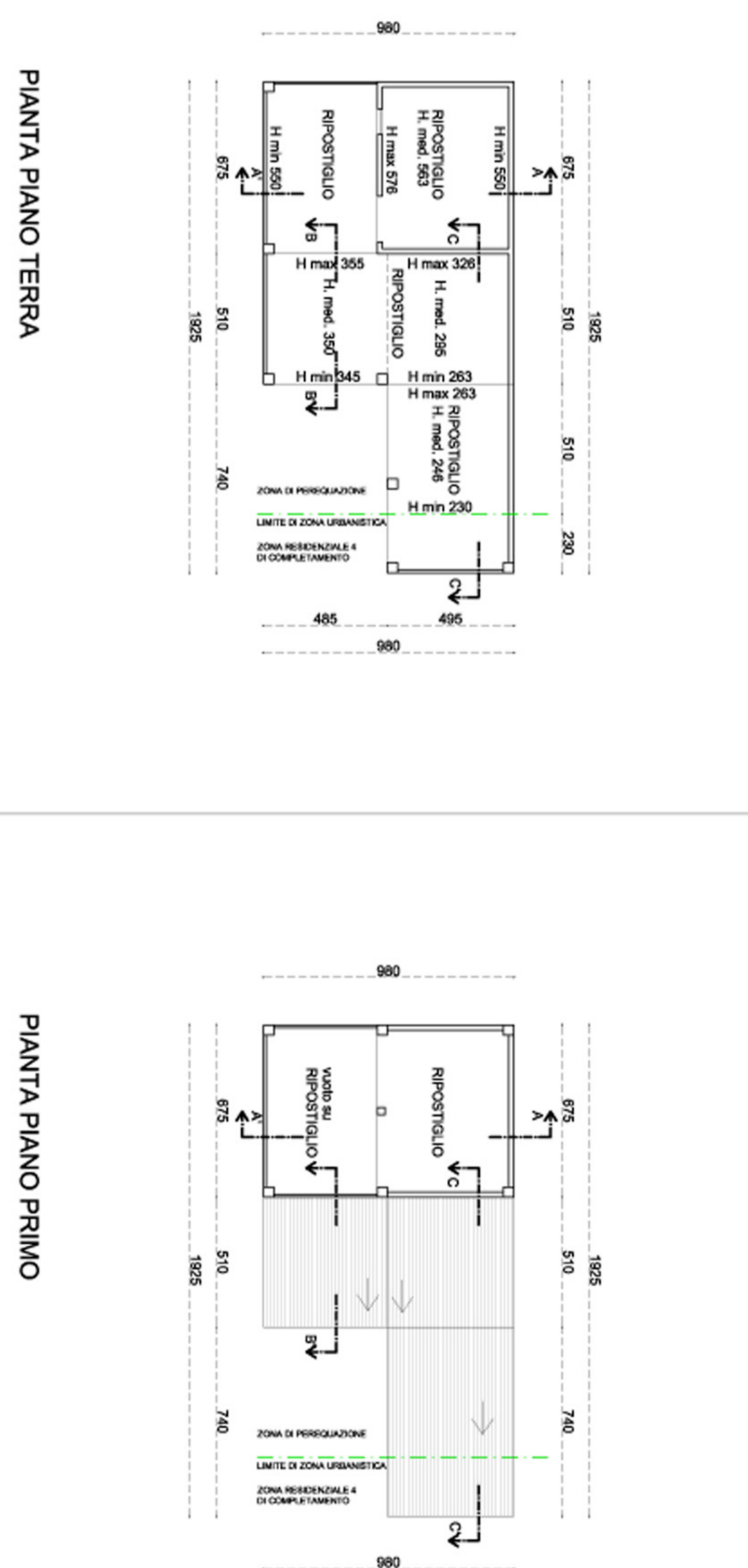
SCHEMA PLANIMETRICO PER CALCOLO VOLUMI E SUPERFICI

CALCOLO SUPERFICIE COPERTA DEI FABBRICATI ESISTENTI

A =	(30,87x12,85/2)+(30,87x12,91/2)	mq =	397,61
B =	(20,00x3,76/2)+(20,00x3,89/2)	mq =	74,40
C =	(16,70x7,10/2)+(16,70x7,03/2)	mq =	117,99
D =	(16,89x8,01/2)+(16,89x8,05/2)	mq =	135,63
E =	(19,53+19,63/2)x7,04	mq =	137,85
F =	(59,81x3,71)	mq =	221,89
TOTALE		mq =	1085,37

CALCOLO VOLUME FABBRICATI ESISTENTI

A =	397,61 x 3,77	mc =	1498,99
B =	74,40 x 3,38	mc =	249,98
C =	117,99 x 3,77	mc =	444,82
D =	135,63 x 3,78	mc =	512,68
E =	137,85 x 4,25	mc =	585,86
F =	221,89 x 2,20	mc =	488,16
TOTALE		mc =	3.780,49



SCHEMA PLANIMETRICO PER CALCOLO VOLUMI E SUPERFICI

CALCOLO SUPERFICIE COPERTA FABBRICATI ESISTENTI

A =	(9,80x6,75)	mq =	66,15
B =	(5,10x4,95)	mq =	24,70
C =	(5,10x4,95)	mq =	25,24
D =	(4,95x5,10)	mq =	25,24
TOTALE		mq =	141,33

CALCOLO VOLUME FABBRICATI ESISTENTI

A =	66,15 x 5,63	mc =	372,42
B =	24,74 x 3,50	mc =	86,45
C =	25,24 x 2,95	mc =	74,45
D =	25,24 x 2,46	mc =	62,09
TOTALE		mc =	595,41