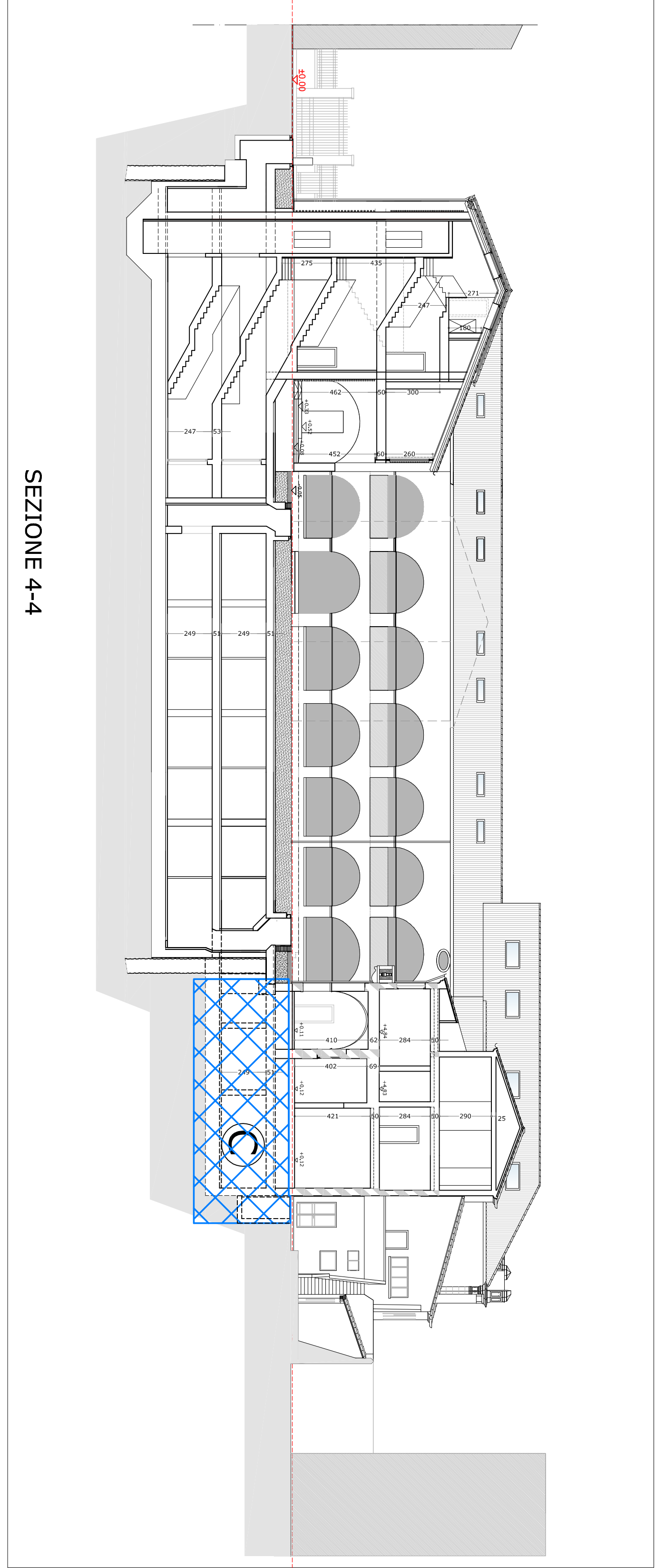
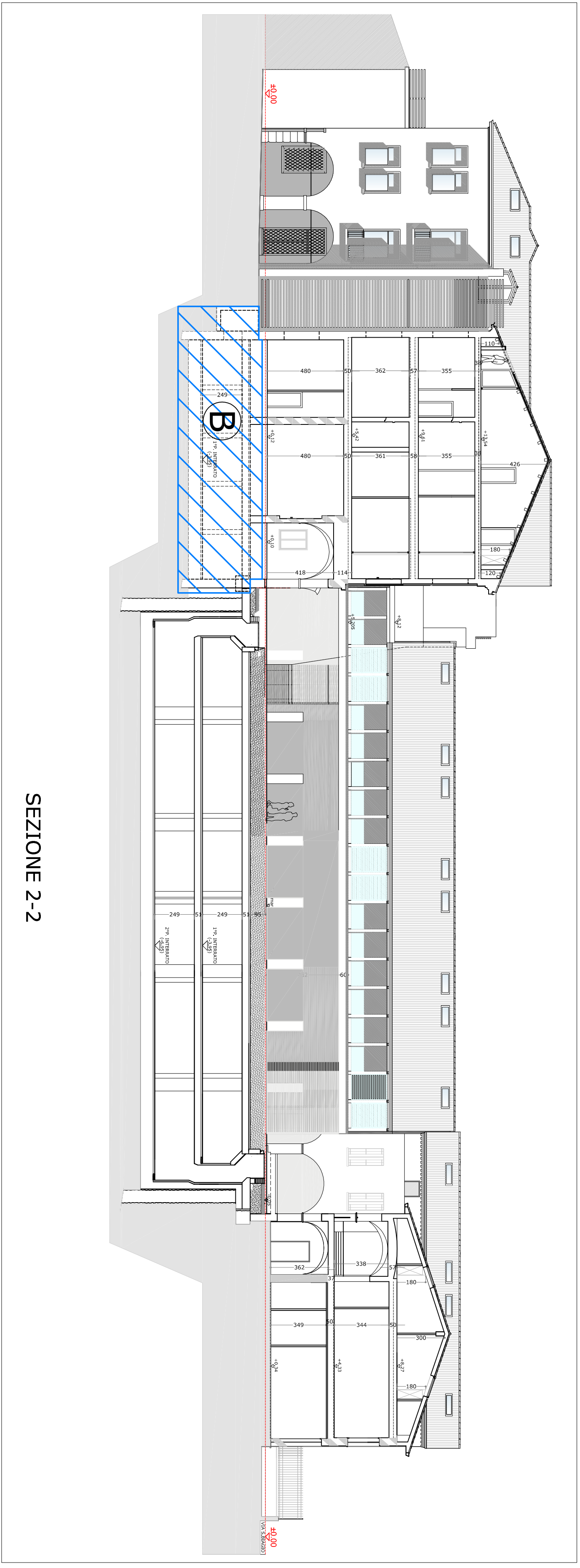


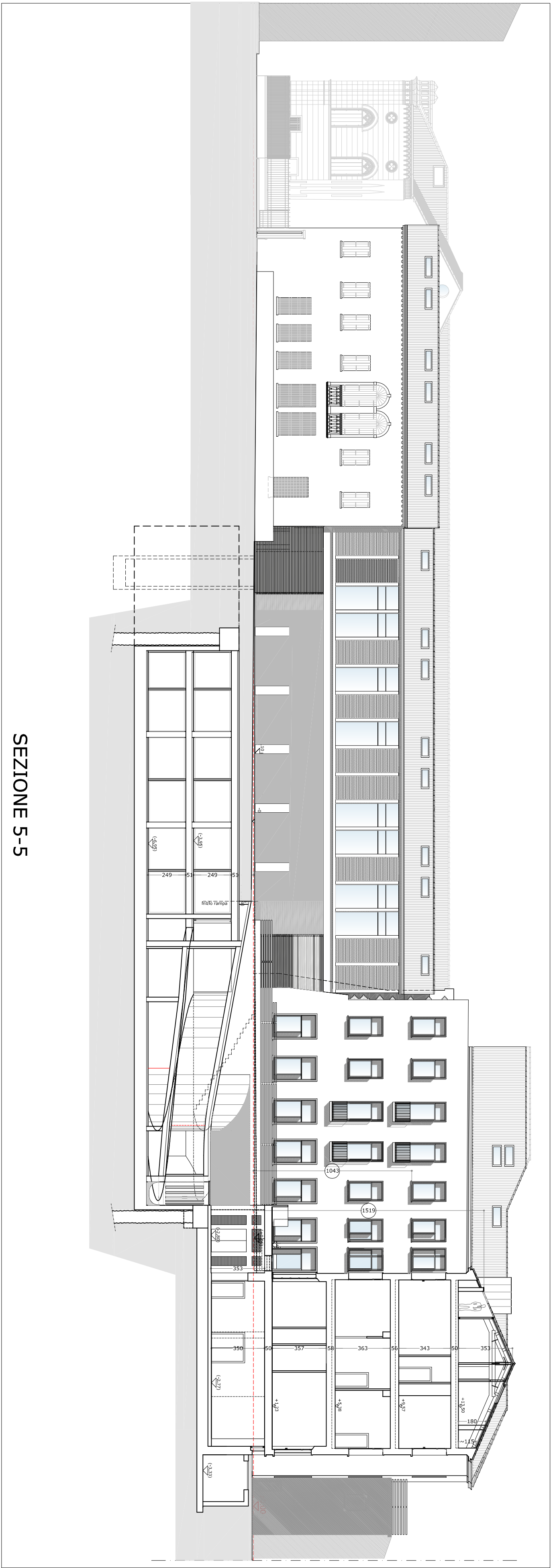
SEZIONE 1-1



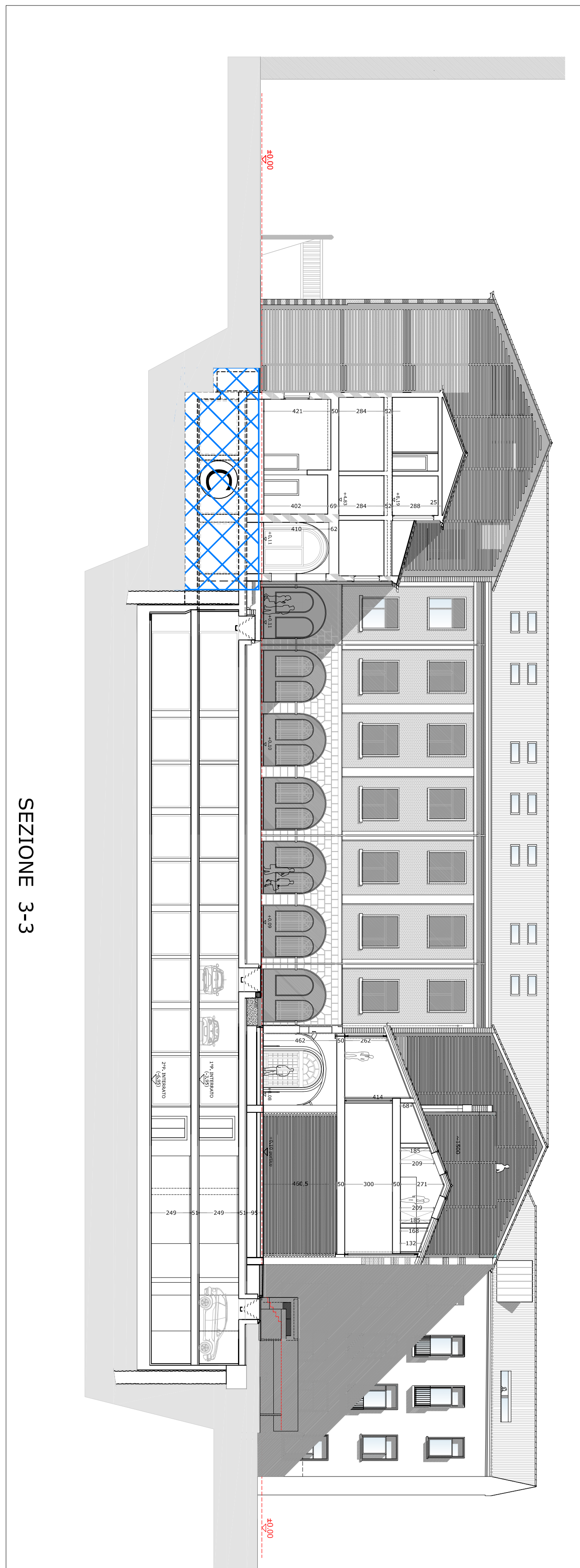
SEZIONE 4-4



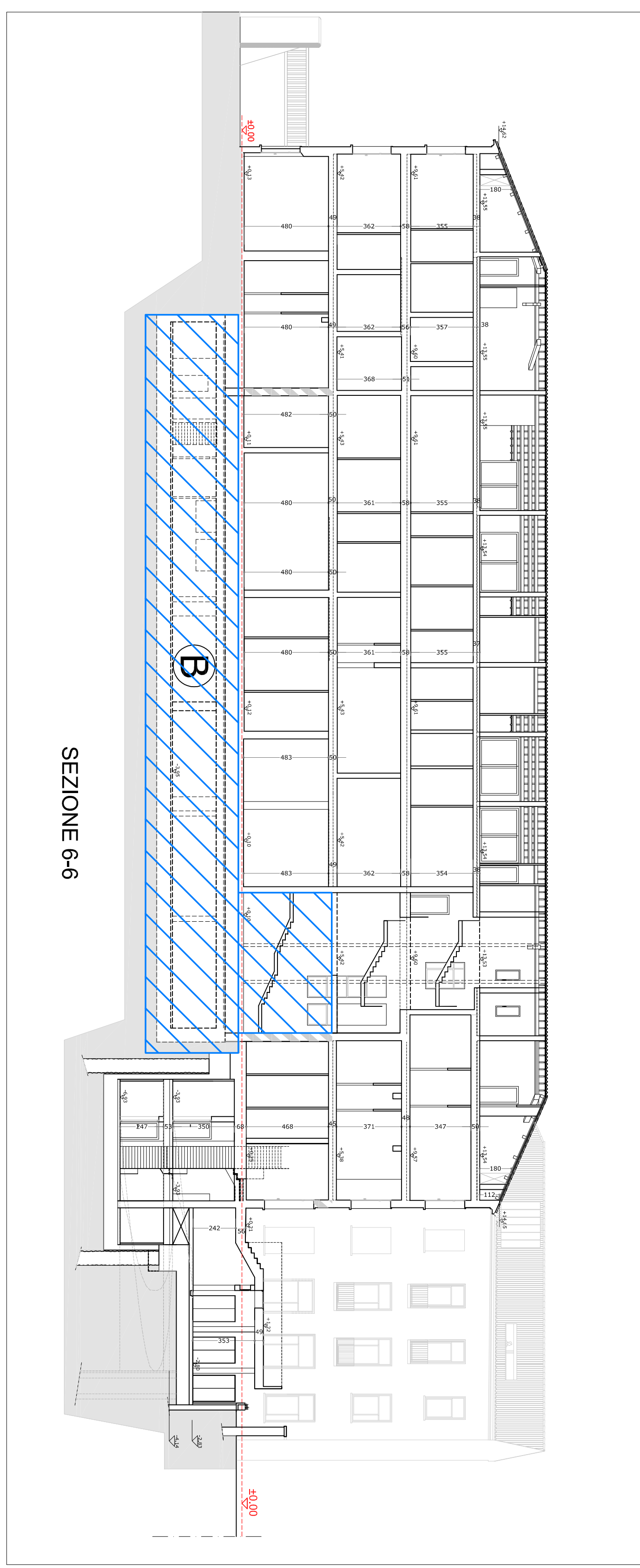
SEZIONE 2-2



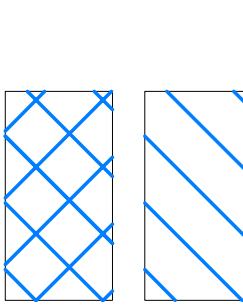
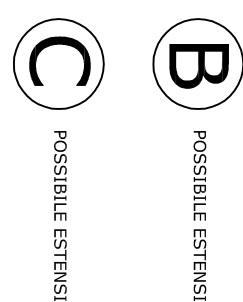
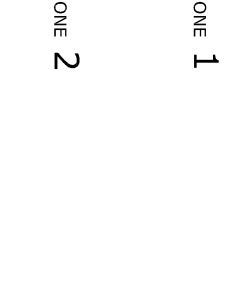
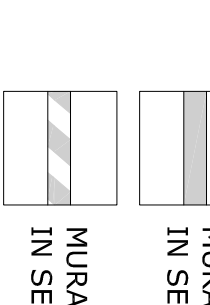
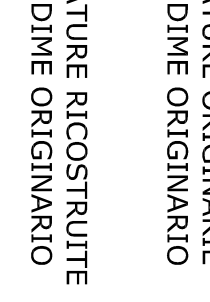
SEZIONE 5-5

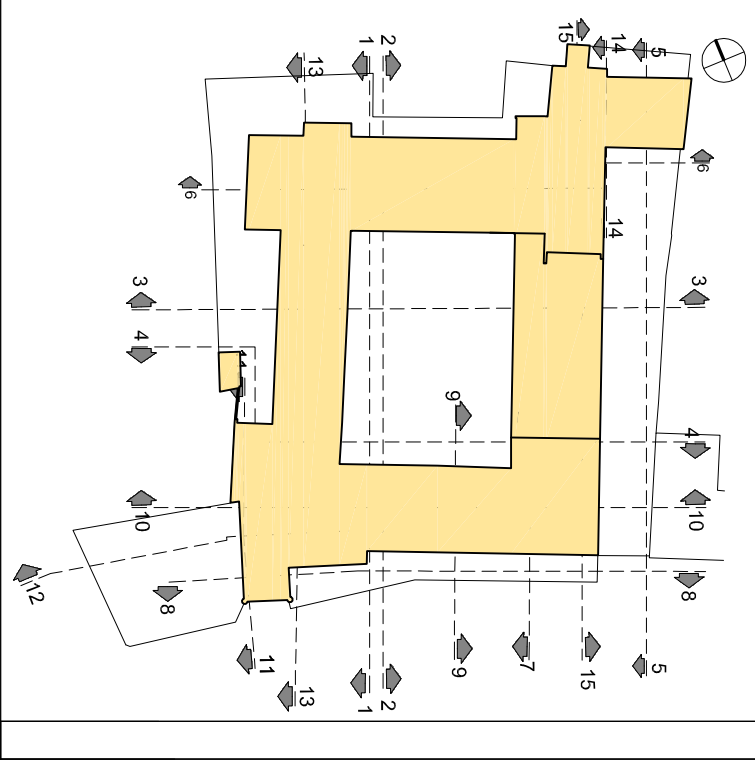
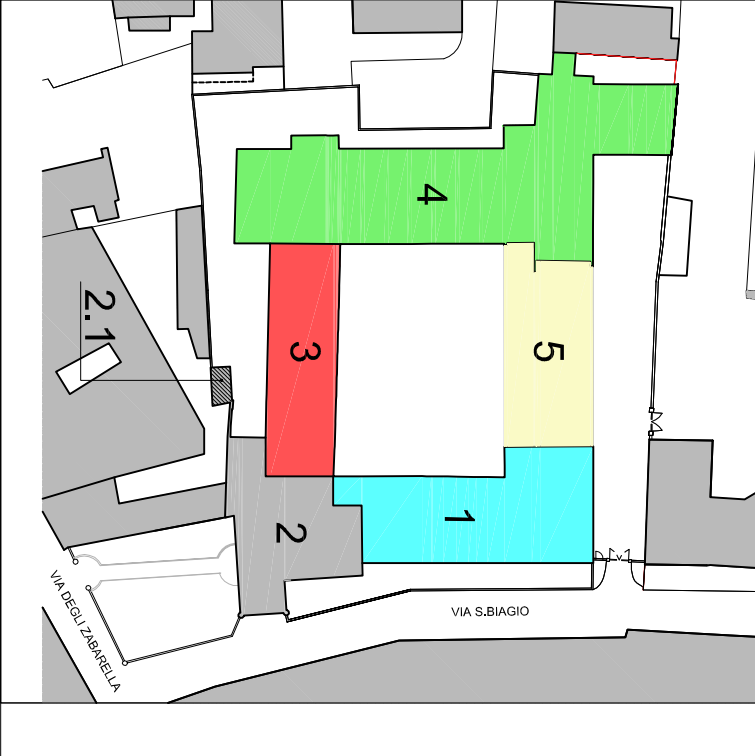


SEZIONE 3-3



SEZIONE 6-6

- LEGENDA**
-  VOLUMI ESISTENTI 1
 -  VOLUMI ESISTENTI 2
 -  VOLUMI ESISTENTI 3
 -  INIZIATIVE ORIGINALI IN SEZIONE ORIGINARIO
 -  INIZIATIVE INCONTRATE IN SEZIONE ORIGINARIO



COMITATO
Bent Stabilis Sng

PROGETTO
Bent Stabilis S.p.A. SRO
 Sedi Stabilis, Via Brennero, 30 - 00187 Roma
 tel. +39 06 5022211 - 06 5022212
 www.bentstabilis.it

RECUPERO
 COMPLESSO EDILIZIO
 EX INTERENZA DI INFANZIA
 VIA DEI ZAMBONELLI SANSO SENSIO 1
 PADOVA

**DOMANDA DI ADOZIONE
 E APPROVAZIONE P.U.A.
 VARIANTE**

439
 VARIANTE
 SEZIONI 1-1, 2-2, 3-3, 4-4, 5-5 e 6-6

PROGETTO	30/01/2018	SCALE	1:200	FOGLIO	127 V
REVISIONE					06