



COMUNE DI PADOVA
SETTORE URBANISTICA E SERVIZI CATASTALI

PIANO URBANISTICO ATTUATIVO
PIANO DI DETTAGLIO

P.E.E.P. Nucleo 6 "Via del Commissario"

MODIFICA PARZIALE

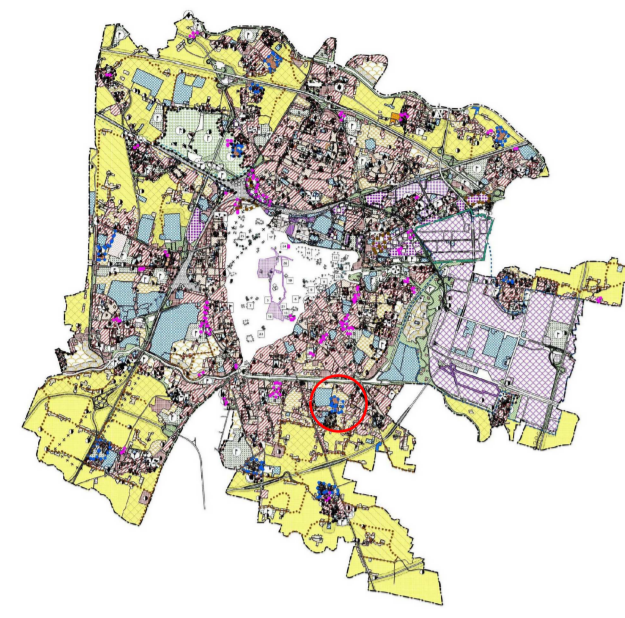
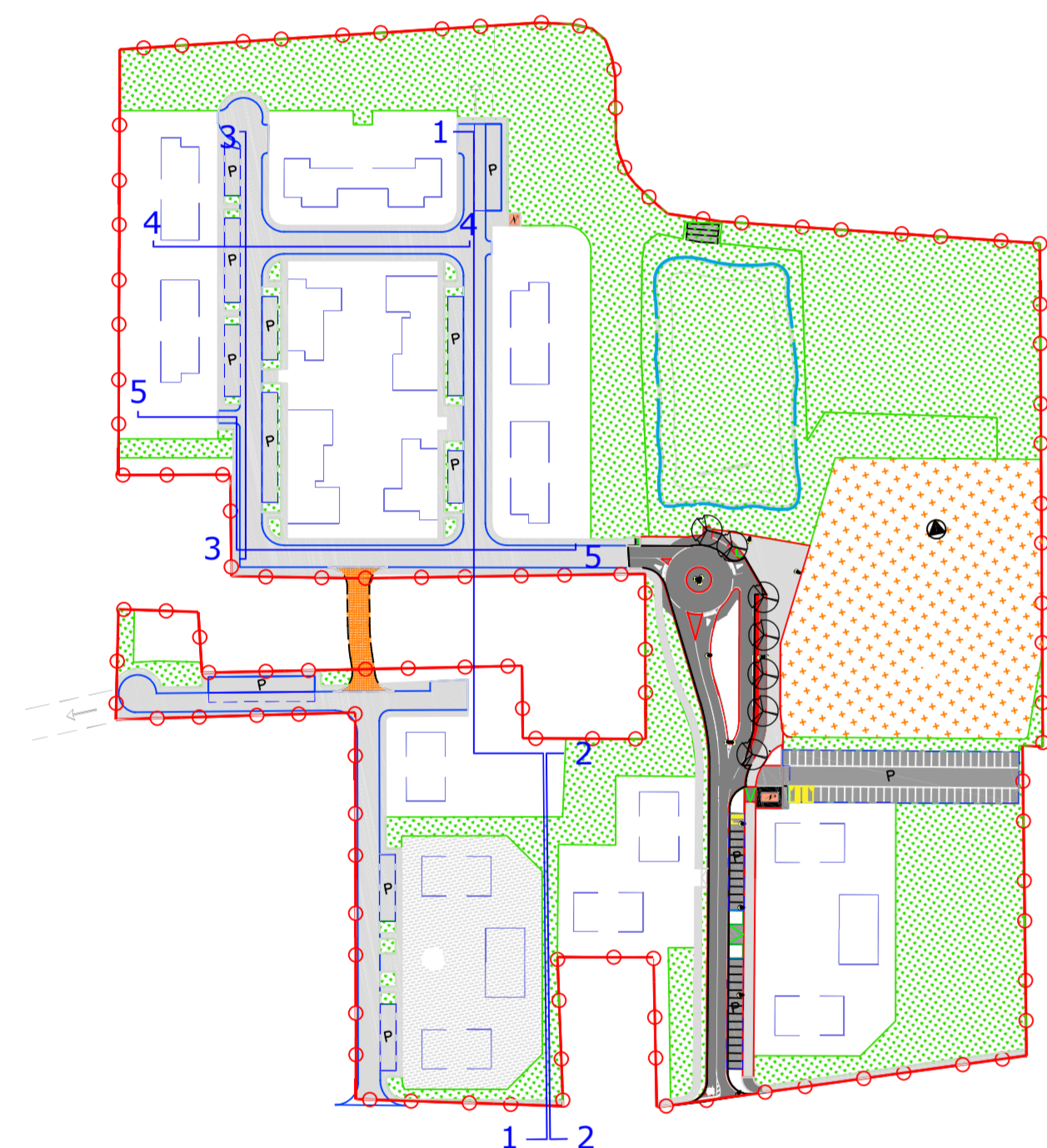
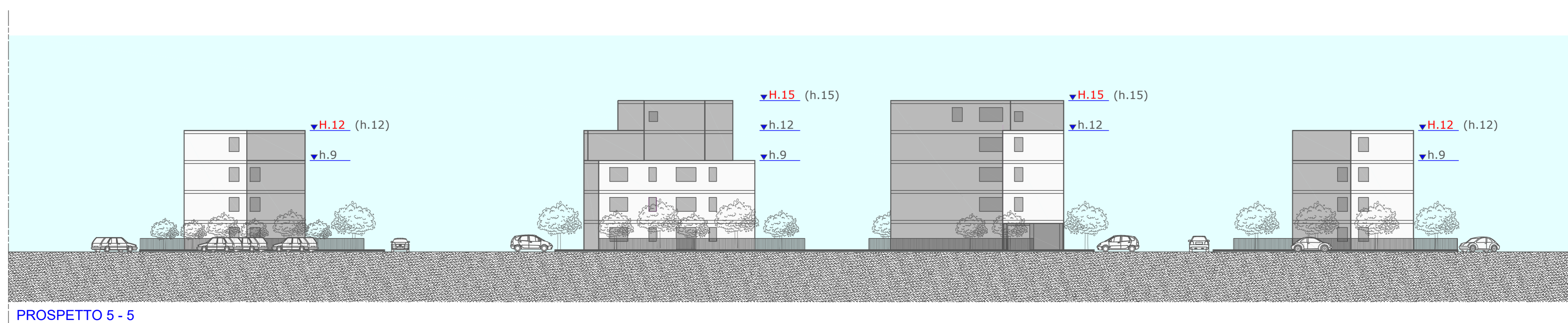
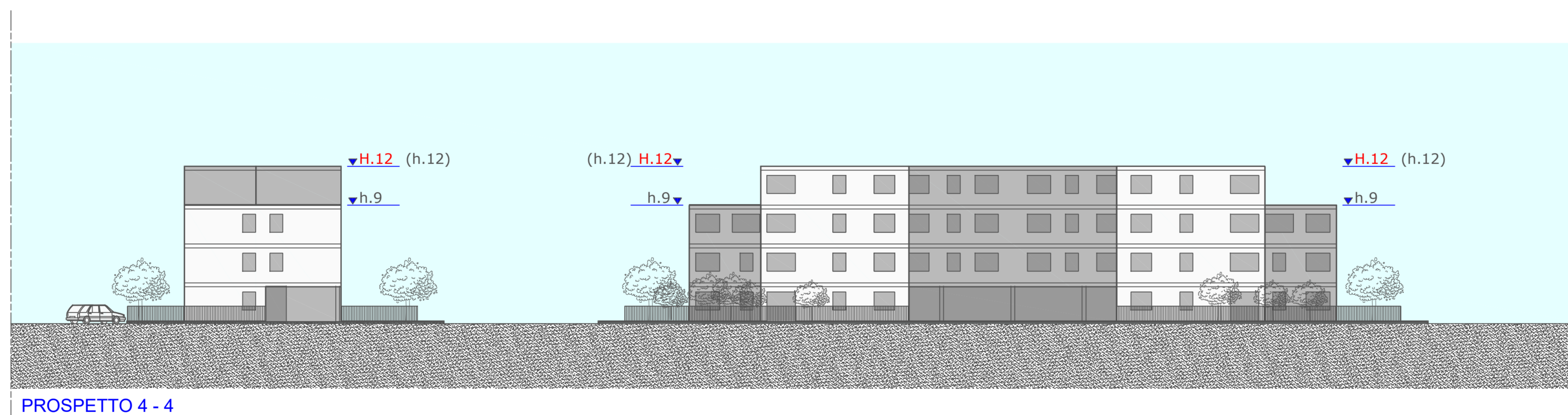
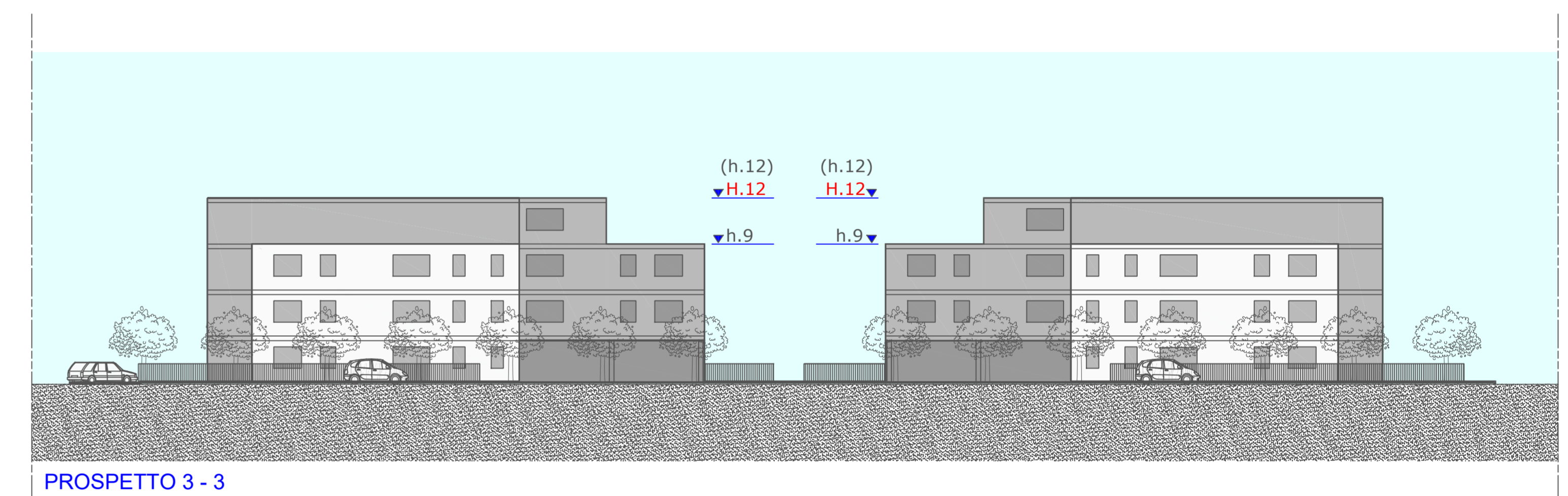
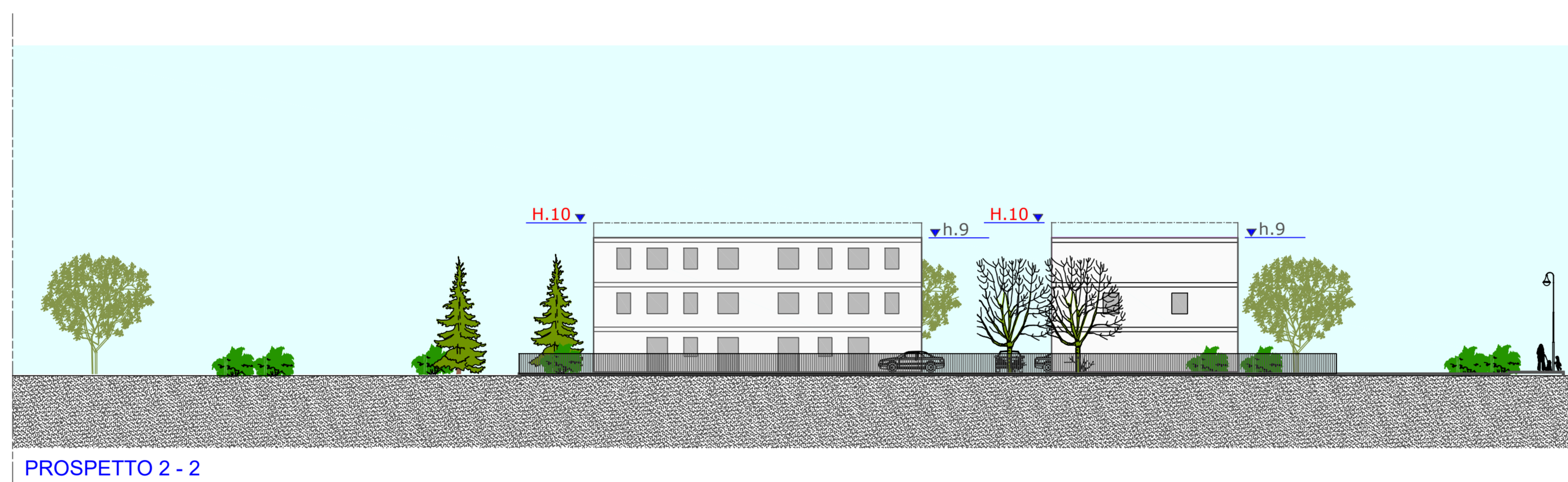
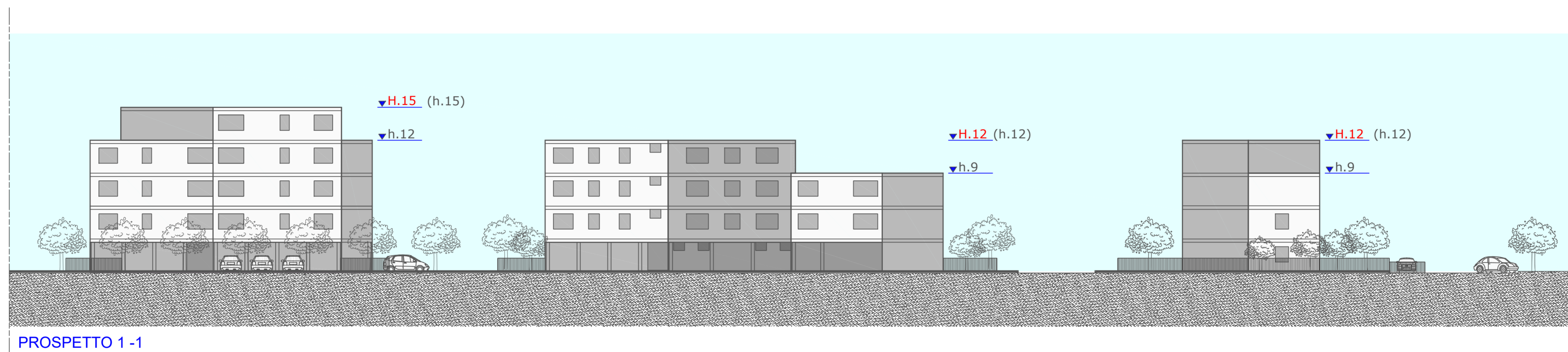
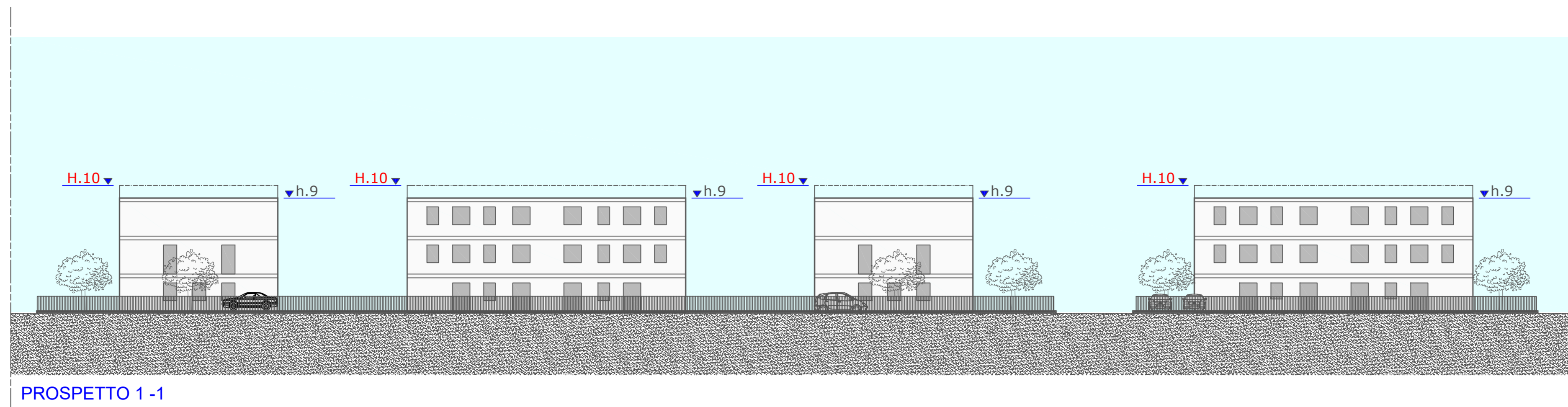


TAVOLA 9

PROFILI REGOLATORI E SEZIONI

PROGETTAZIONE URBANISTICA

IL CAPO SETTORE (ad interim)
Arch. Franco Fabris



Perimetro del nucleo

