

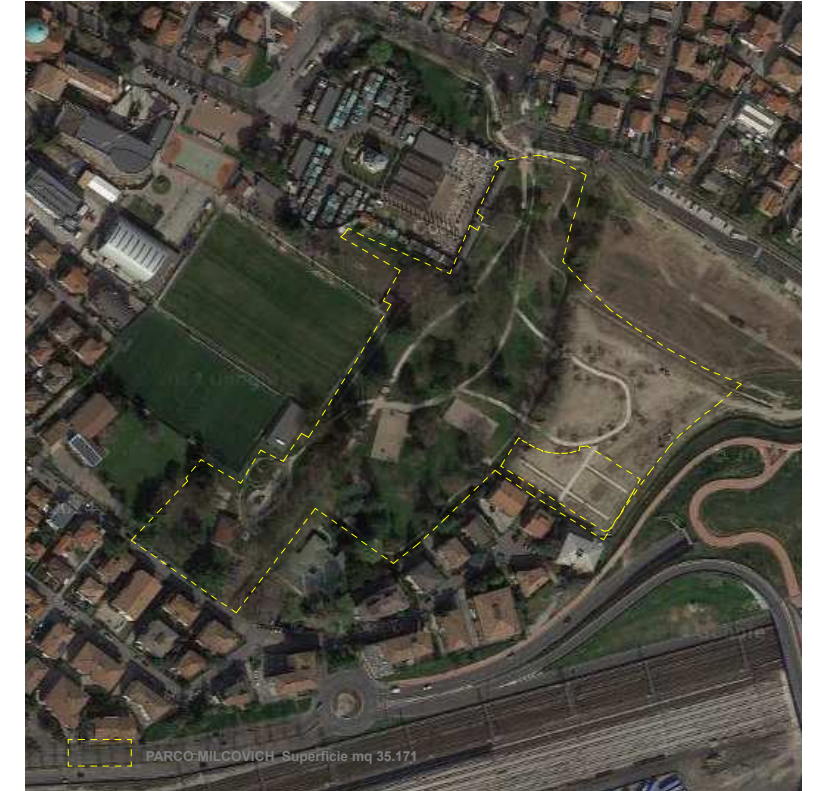
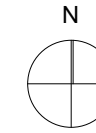
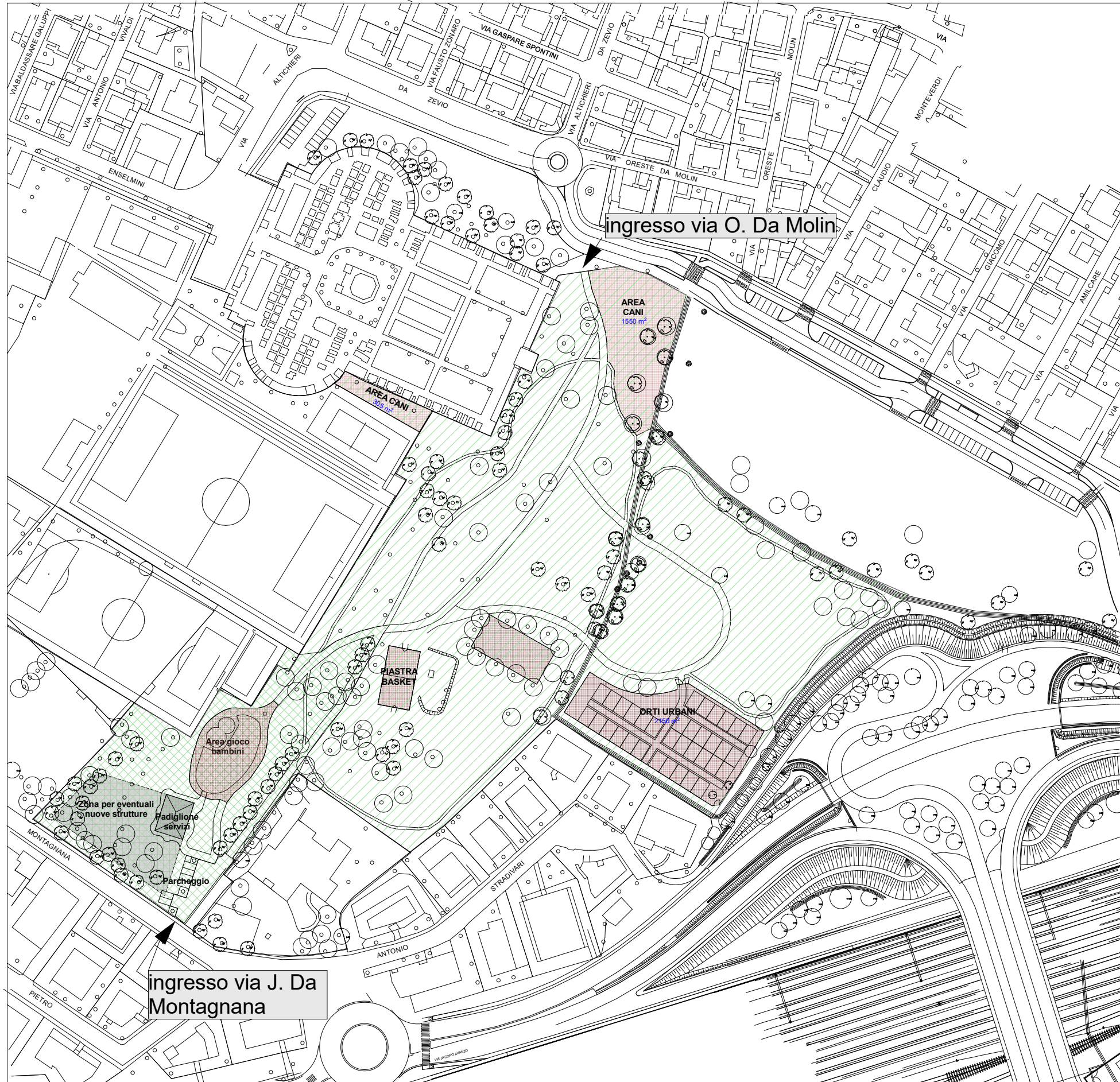



-  Area intensiva
-  Area estensiva



Ortofoto - scala 1:5000

PARCO MILCOVICH - Planimetria scala 1:2000

 <b>Comune di Padova - Settore Verde, Parchi e Agricoltura Urbana</b> via N. Tommaseo, 60 Padova tel.: +39.049.8204490- fax: +39.049.8207126		
<b>Gestione, custodia e manutenzione di parchi cittadini</b>		data: Ottobre 2019
		revisione:
<b>Parco Milcovich via J. da Montagnana</b>		Tavola numero:
		<b>U</b>
Progettista:	Responsabile del procedimento: dott.Deg'Innocenti Ciro	Riferimento: